

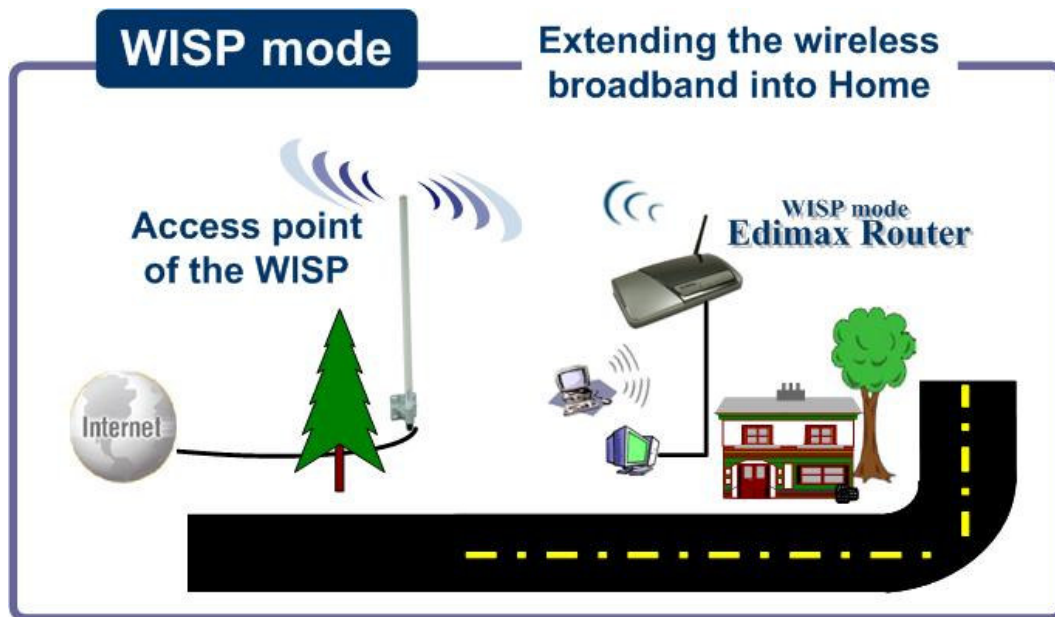


# How do I set up Edimax Router to connect to the outdoor AP of the ISP

Author: Longcent

## Objective:

This FAQ is for guiding you to configure the Edimax AP-Router to connect with the outdoor AP deployed by the WISP for sharing wireless Internet broadband to multiple wire or wireless PCs, as shown in the below figure.

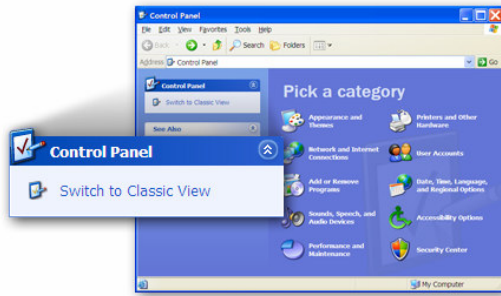


## Configuration steps:

1. Set your wire network card to obtain IP automatically.



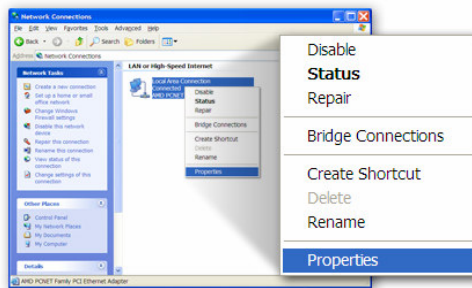
- 1.1 Click "Start" in the task bar and select "Control Panel".



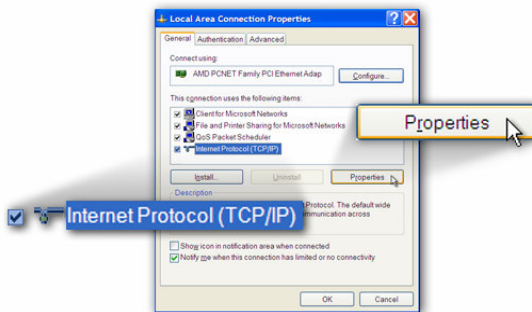
1.2 Click “Switch to Classic View” on the left top.



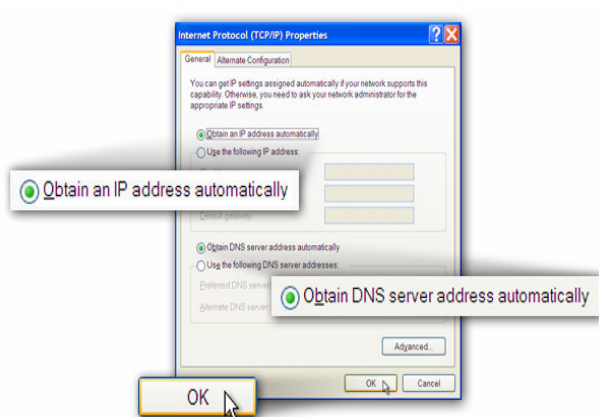
1.3 Double-click the “Network Connection” icon.



1.4 Right-click the “Local Area Connection” and select “Properties”.

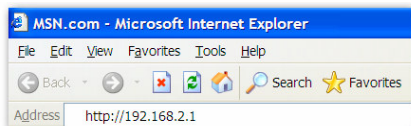


1.5 Select “Internet Protocol” and click “Properties”.



1.6 Ensure the option “**Obtain an IP address automatically**” and “**Obtain DNS address automatically**” is checked and click “**OK**”.

## 2. Edimax Router configuration:

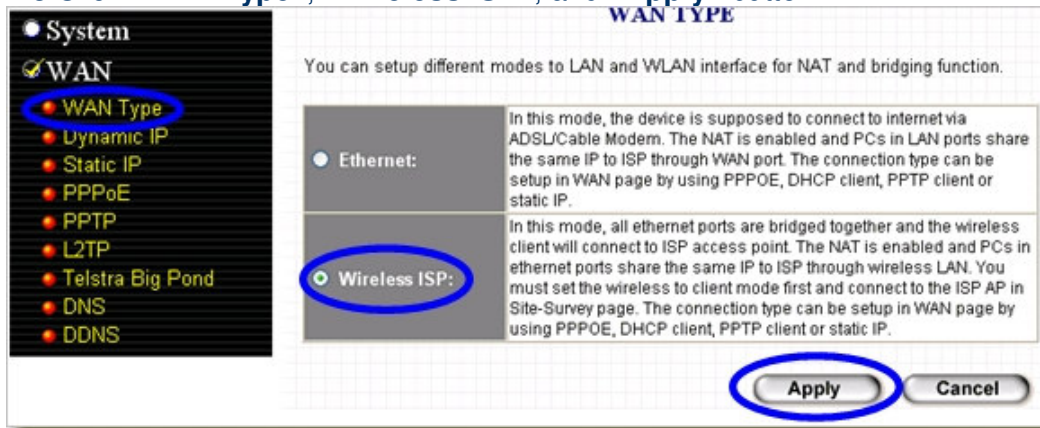


2.1 Enter the default IP of the router .

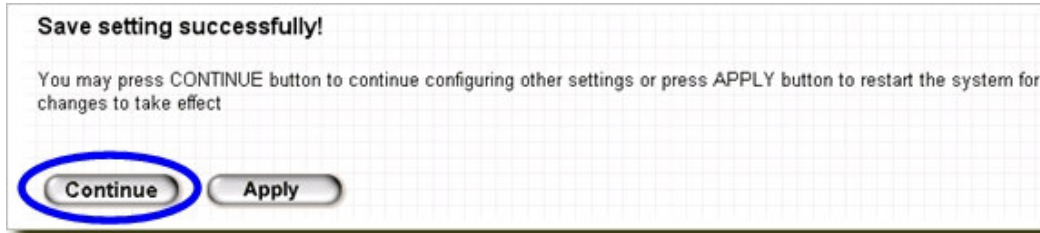


2.2 Enter the default user name “**admin**” and password “**1234**” to log on.

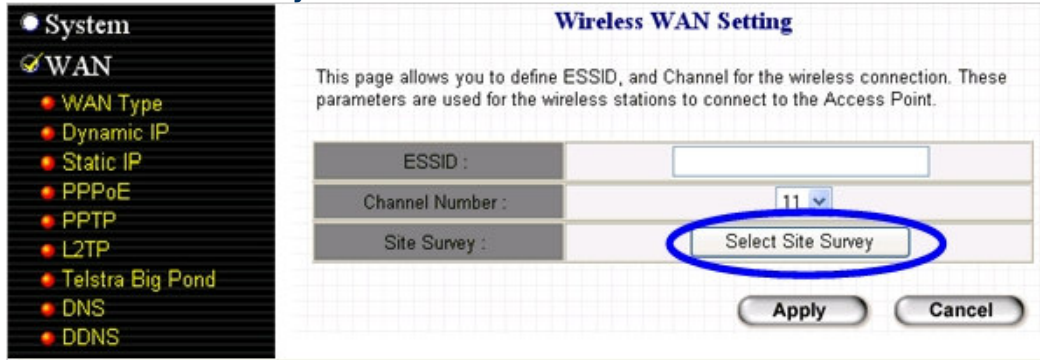
2.3 Click “**WAN Type**”, “**Wireless ISP**”, and “**Apply**” button.



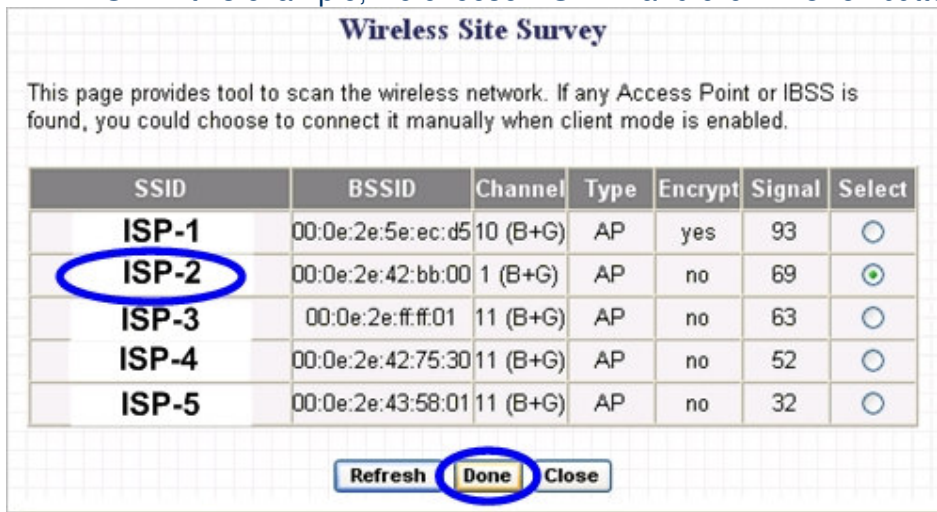
2.4 Click “Continue” button.



2.5 Click “Site Survey” button.



2.6 Once the “Site survey” button is clicked, the pop-up window will show you all the nearby APs. Please click the name of the AP deployed by your WISP. In this example, we choose “ISP-2” and click “Done” button.





2.7 Click “Dynamic IP”, and “Apply” button.

The Host Name is optional, but may be required by some Service Providers. The default MAC Address is set to the WAN physical interface on the Broadband router. If required by your Service Provider, you can use the "Clone MAC Address" button to copy the MAC Address of the Network Interface Card installed in your PC and replace the WAN MAC Address with this MAC Address.

Host Name :	<input type="text"/>
MAC Address :	000000000000
<input type="button" value="Clone Mac Address"/>	

2.8 Click “Apply” button for rebooting the router.

**Save setting successfully!**

You may press CONTINUE button to continue configuring other settings or press APPLY button to restart the system for changes to take effect

2.9 Check whether the IP addresses assigned by the WISP is logged in the below table by click “Status Info” and “Internet Connection”.

**EDIMAX**  
NETWORKING PEOPLE TOGETHER

Quick Setup General Setup **Status Info**

**Status**

- Internet Connection**
- Device Status
- System Log
- Security Log
- Active DHCP Client
- Statistics

**Internet Connection**

View the current internet connection status and related information.

Attain IP Protocol :	Dynamic IP connect
IP Address :	221.169.14.10
Subnet Mask :	255.255.255.0
Default Gateway :	221.169.14.1
MAC Address :	00:0E:2E:00:08:46
Primary DNS :	139.175.55.244
Secondary DNS :	139.175.252.16



### Note:

If these is an IP address shown in the step 2.9 table, it indicates that the router is connected to your ISP, and you are able to access the Internet.

**Congratulations!**