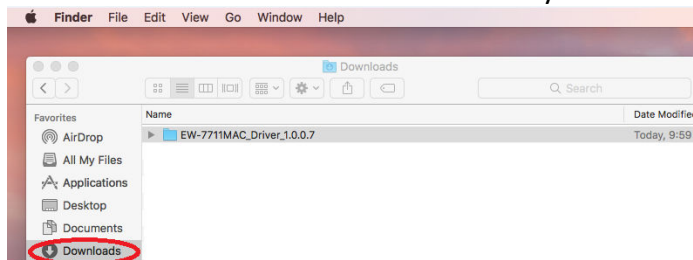


## Here is the instruction to install Mac driver of EW-7711MAC into Mac OS 10.12.x system

1. Please go to our web site at <http://www.edimax.us>  
Under “Support” in the main menu, click on “Driver Downloads”.  
Go to section [4] 802.11AC 5ghz only.

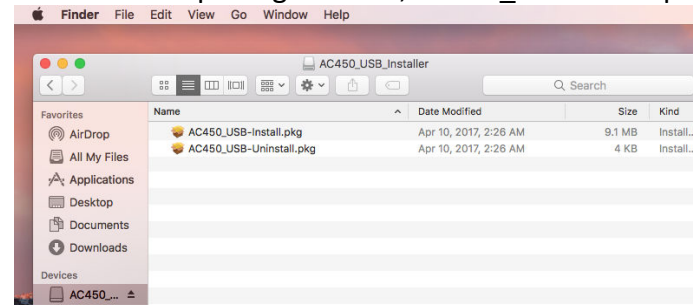
Windows drivers	Wireless AC1200 Dual-Band PCIe Adapter for Windows 7, 8, 8.1, 10	Setup program v1.0.0.3	
[4] 802.11AC 5Ghz only	Single Band 5Ghz 802.11ac Series	Driver	Manual
EW-7711MAC	AC450 wireless adapter Mac OS 10.7 to 10.11	Mac v1.0.0.4	<a href="#">PDF</a>
Mac driver	AC450 wireless adapter Mac OS 10.12	Mac v1.0.0.7	<a href="#">PDF</a>
EW-7711ULC	AC450 wireless adapter Windows XP/Vista/Win7/Win8/Win8.1	Windows v1.0.0.3	

Click on the blue driver link v1.0.0.7 to download the Mac OS 10.12 driver.  
The EW-7711MAC driver will be saved in your Downloads folder.



Open the driver file.

There are two packages inside, AC450\_USB-install.pkg and AC450\_USB-Uninstall.pkg.



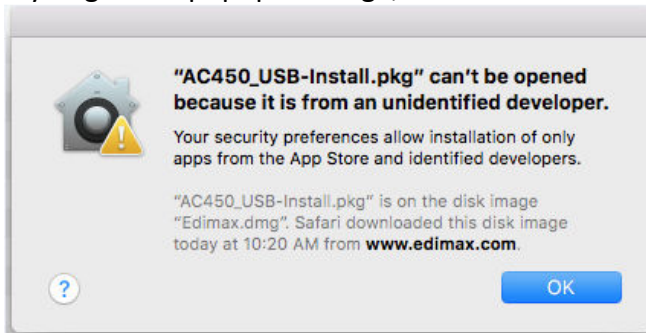
2. Before you run the Installer package (AC450\_USB-install.pkg), please go to the Finder then go to \Applications folder.



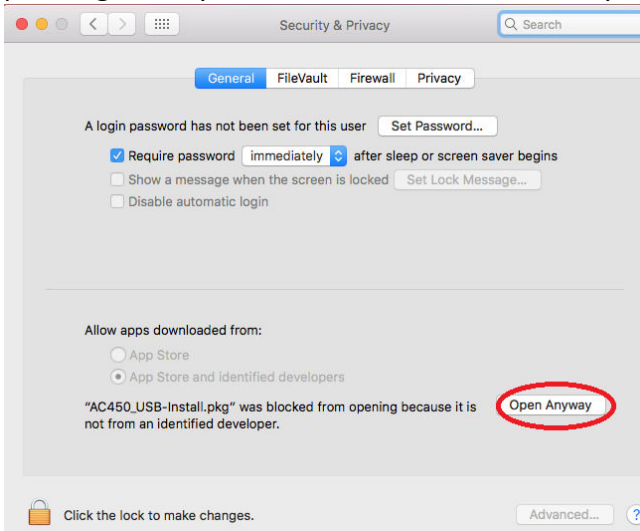
If you see Edimax Wireless Utility existed in \Applications folder, it means you ever installed an old Edimax driver and that old driver needs to be removed. Please run the AC450\_USB-Uninstall.pkg package from the driver file. Go through the installation process of it. Running the uninstaller package will remove the Edimax Wireless Utility from \Applications folder and ask you reboot your computer.

3. Once you verify there is no Edimax Wireless Utility in \Applications folder, you can go ahead to run the AC450\_USB-install.pkg file.

If you get this popup message,

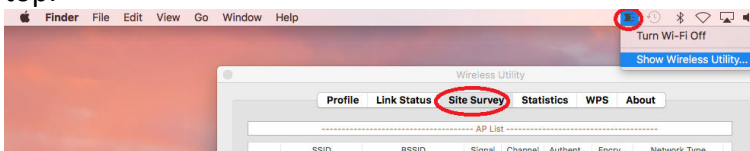


please go to “System Preferences” >> “Security & Privacy” to allow the blocked package to run.

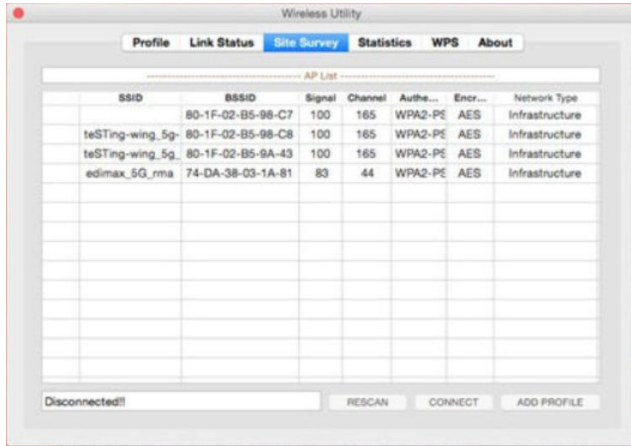


Continue to install the software package. At the end, please click “Restart” button to reboot system.

4. After the computer restart, plug in the EW-7711MAC USB adapter. You will see a silver light on EW-7711MAC USB adapter. You also will find the Wireless Utility with black E logo on the top.

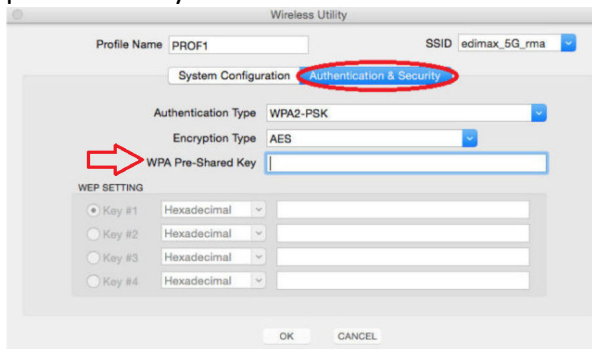


Click on the E icon. The first line should be “Turn Wi-Fi Off”. If the first line is “Turn Wi-Fi On”, it means the wireless adapter is disabled. Please click on “Turn Wi-Fi On” to enable the Wireless adapter. Under “Site Survey” in Wireless Utility, choose your 5Ghz Wi-Fi network, then click on “ADD PROFILE”.



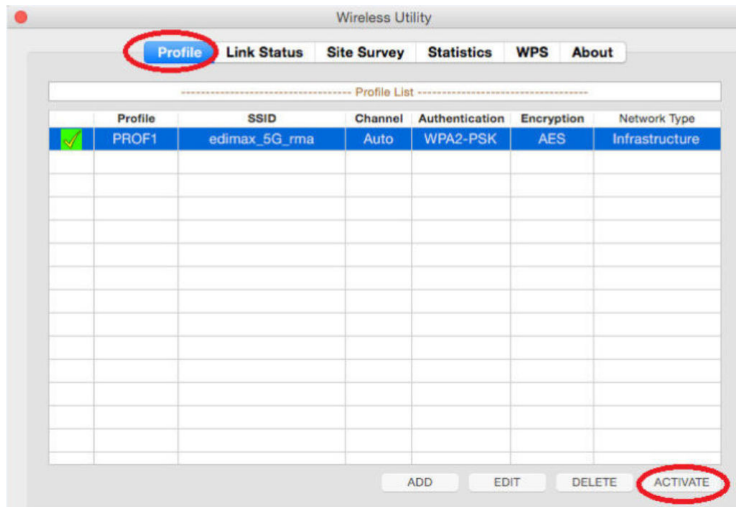
In case you do not see your wireless network, please verify your WiFi router support 5Ghz WiFi network and use a channel number in 36, 40, 44, 48, 149, 153, 157, 161, or 165. Some WiFi routers use Automatically channel and pickup a DFS channel from 52 to 140. EW-7711MAC does not support DFS channel. Please modify the 5Ghz WiFi channel in your router.

Click on Authentication & Security tab. Both the Authentication Type and the Encryption Type should have been filled in for you. Do not change them. Just type in the wireless security password of your WiFi network in the box of WPA Pre-Shared key.



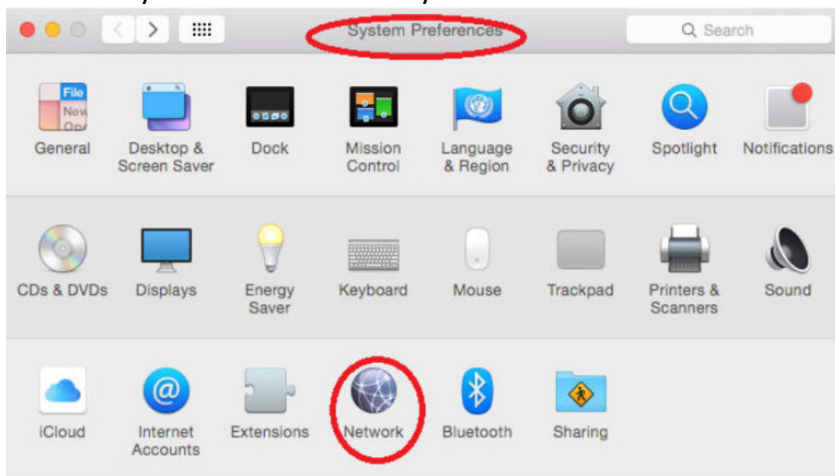
Click on OK.

You will be redirected to the Profile tab automatically. Select the Profile of your network and click on “Activate”.

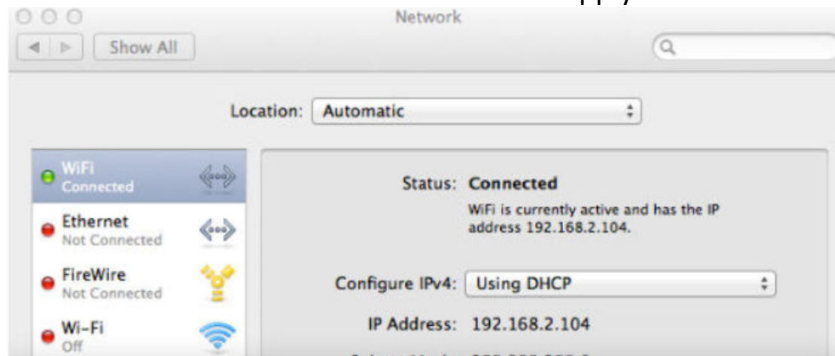


You can click the red X on the top left corner to close the Wireless Utility.

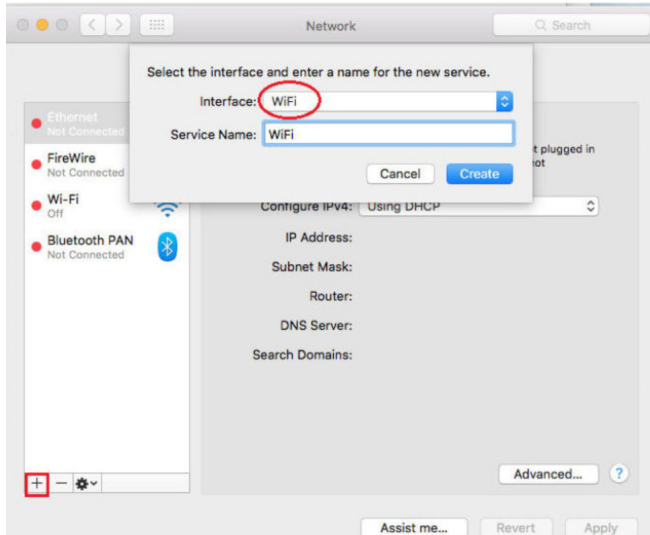
6. Go to System Preferences in your Macintosh. Go to Network.



You will see the new WiFi adapter which is our Edimax EW-7711MAC adapter. The green dot means it is connected to Internet. Click on Apply button.



In case you do not see the new WiFi adapter listed in the left box, you can click on the + button to manually add the new WiFi adapter.



Click on Create button. Then click on Apply button.

Please note the Wi-Fi adapter which has a hyphen between Wi and Fi is the built-in wireless adapter of your Macintosh. You may click "Turn Wi-Fi Off" to turn off the built-in wireless adapter since our WiFi adapter is working fine.

