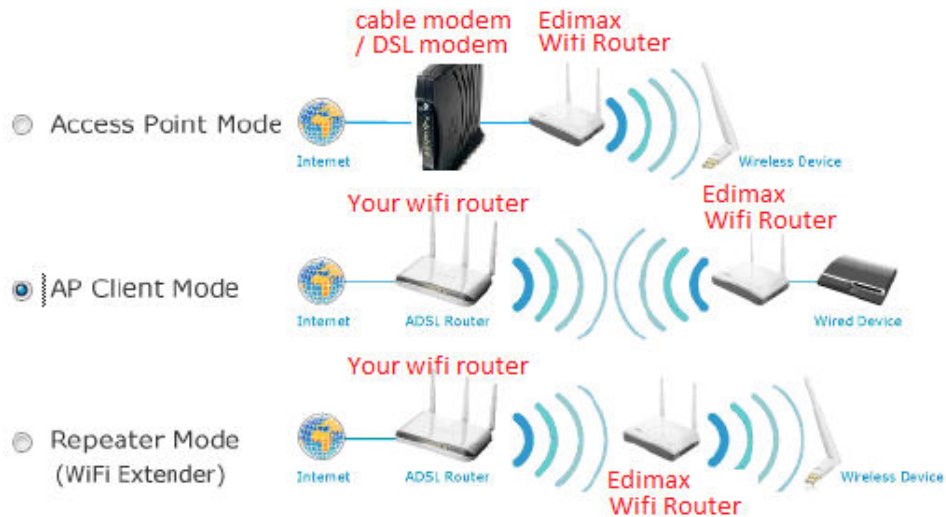


EDIMAX COMPUTER INC.

How to make Edimax wifi router as a wireless bridge for your ethernet devices to wirelessly connect to an existing wifi network

If your computer, Blu-Ray player, internet TV, xBox...etc only has ethernet port, you can use the AP Client mode of Edimax wireless router for them to connect to your wifi network.



© 2011 Edimax Computer
3350 Scott Blvd., Building #15
Santa Clara, California 95054, USA
Phone 408-496-1105 • Fax 408-980-1630

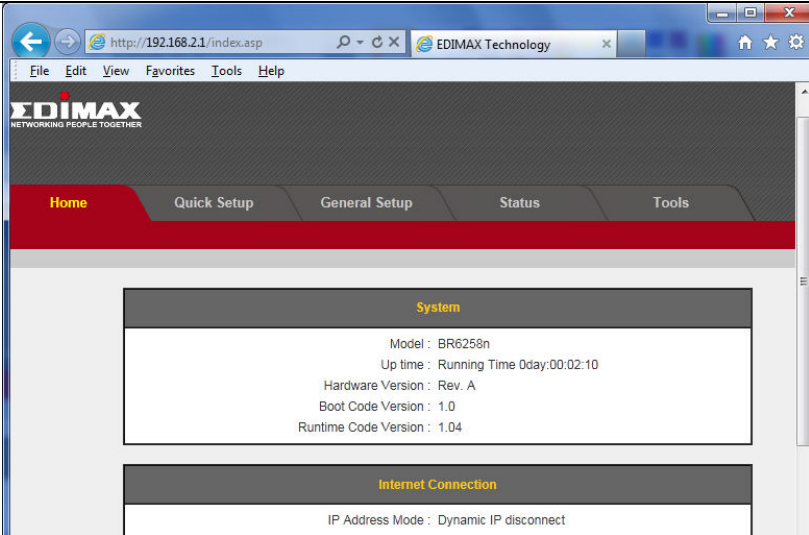
www.edimax.us

Congratulations on your purchase of the Edimax Wireless Router. We back them up with great technical support. We are committed to making you a success because our success depends on yours.

This is a detailed step-by-step installation instruction for the AP Client mode setup. AP Client mode is also known as Wireless bridge or Station Infrastructure.

Assumptions:

1. You have a Wireless router from Edimax. We used BR-6258n as example. Your screen may look somewhat different with BR-6258n.
2. Use Ethernet cable to connect your computer to a LAN port of Edimax wireless router. For BR-6258n, the yellow port is the LAN port.
3. Keep the WAN port of Edimax router unplugged. For BR-6258n, the blue port is the WAN port.
4. Plug in the power adapter to Edimax wifi router.
5. Make sure your main wireless router is powered on. Its DHCP server function is enabled. The main wireless router will give dynamic IP addresses to computers in the network.
6. If your main wireless router has wireless encryption setting, please verify the wireless encryption passphrase (also known as network key or password) of your wireless network.



Open your web browser like Internet Explorer, Google Chrome...

In the address box, enter http://192.168.2.1 hit Enter.

Note, your search box is not the address box. Type in http://192.168.2.1 in Search box will search on Internet.

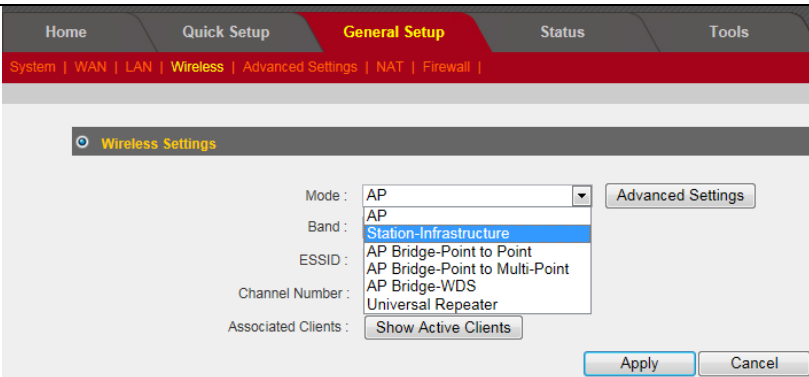
With http://192.168.2.1 entered, you should get a prompt for username/password.

Enter the default username and password.

Username: admin

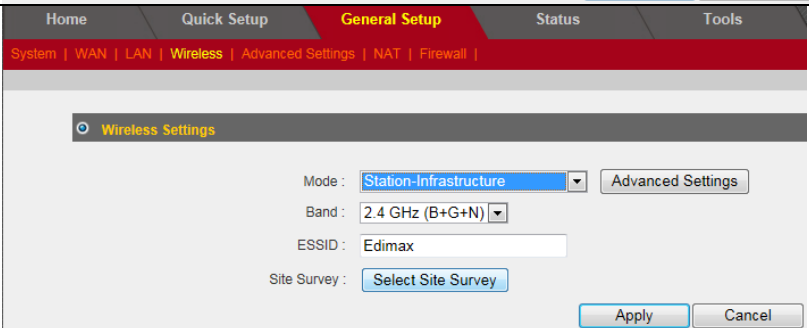
Password 1234

Get into the router's configuration page.



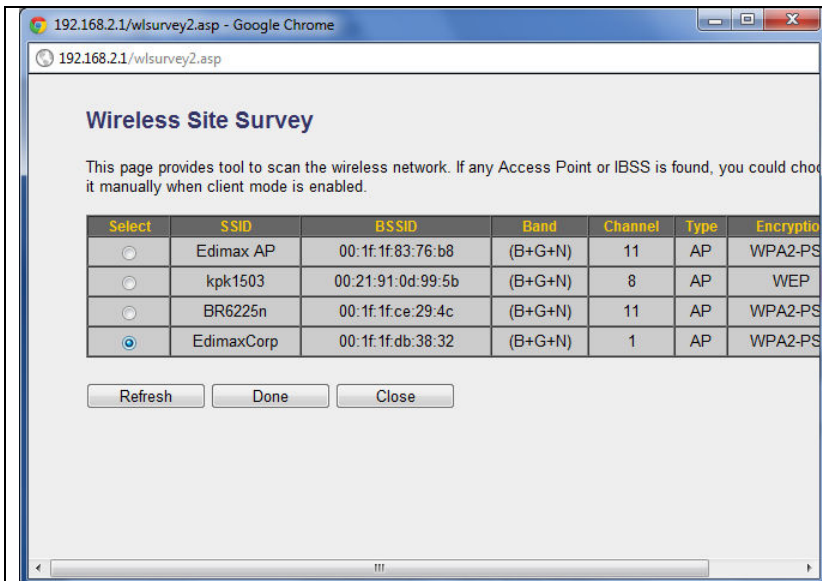
Click on General Setup in the menu. Click on Wireless.

In the field of "Mode", select "Station Infrastructure" as the Mode.



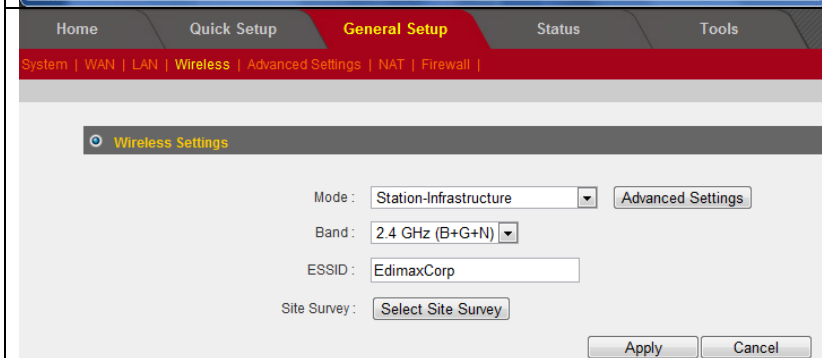
The button "Select Site Survey" appeared.

Click on the "Select Site Survey" button.



A new window pops up and shows available wireless networks.

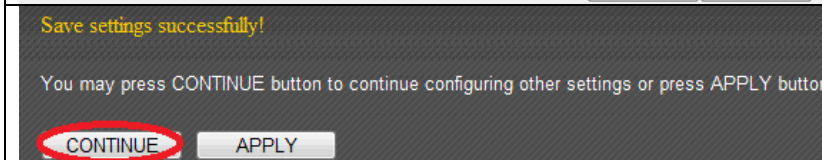
Select your wireless network. Click on Done. The Wireless Site Survey window will be closed automatically.



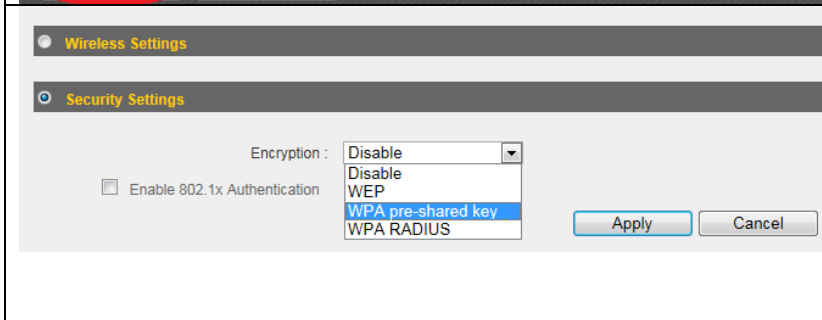
Please note the ESSID has been changed. It should be the SSID of your existing wireless network.

In this example, “EdimaxCorp” is our main router.

Click on Apply button.

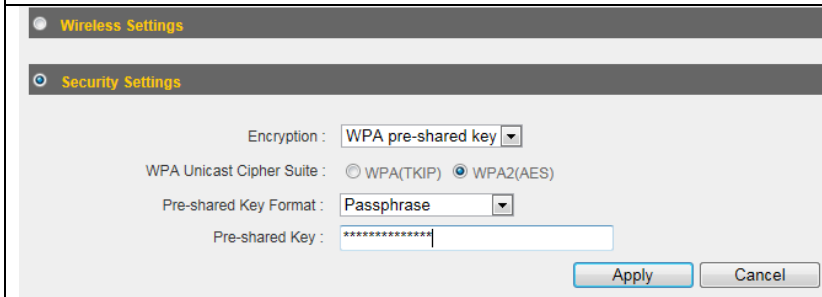


Click on Continue button. We have more configurations to set with.



Go to Security Settings. The encryption is disabled by default.

If your wireless router has wireless encryption enabled, you need to use the same security password in Edimax devices. If you are not sure about the encryption passphrase, please verify the setting in your existing wireless router.



Since the existing network uses WPA2 AES, we setup the Edimax device use WPA2 AES. If your wireless router has options like WPA2-personal, WPA-personal, WPA/WPA2 mixed. Please make sure you select WPA2-personal with AES.

Here we enter the pre-shared key (also known as passphrase). It is the same passphrase used in the main wifi network. Click on Apply

Save settings successfully!

You may press CONTINUE button to continue configuring other settings or press APPLY button

CONTINUE APPLY

Click on Continue button. Next we are going to disable router function.

Home Quick Setup **General Setup**

System | WAN | LAN | Wireless | Advanced Settings | NAT | Firewall |

LAN IP

IP address : 192.168.2.1
 Subnet Mask : 255.255.255.0
 802.1d Spanning Tree : Disabled
 DHCP Server : Enabled
 Lease Time : Enabled

DHCP Server

Start IP : 192.168.2.100
 End IP : 192.168.2.200

Click on LAN setting.

Have the option of “DHCP Server” turn off.

The default IP address is 192.168.2.1. It is optional that you assign a new IP address to the Edimax device. The Station Infrastructure can work fine even its IP address is not in the wireless network.

However, you may want to assign a new IP which comply with your network. That may help you trouble shoot and easily access the BR-6258n later.

Click on Apply.

Save settings successfully!

You may press CONTINUE button to continue configuring other settings or press APPLY button

CONTINUE APPLY

Click on Continue button. We have one more setting to be done.

Home Quick Setup **General Setup** Status Tools

System | WAN | LAN | Wireless | Advanced Settings | NAT | Firewall |

- Virtual Server
- Special applications
- UPnP Setting
- ALG Settings
- Static Routing**

Enable Static Routing

Destination LAN IP	Subnet Mask	Default Gateway	Hop Count	Interface
<input type="text"/>	<input type="text"/>	<input type="text"/>	<input type="text"/>	LAN

Add Reset

Current Static Routing Table:

NO.	Destination LAN IP	Subnet Mask	Default Gateway	Hop Count	Interface	Select

Delete Selected Delete All

Apply

Go to NAT settings.

Go to the option of “Static Routing”.

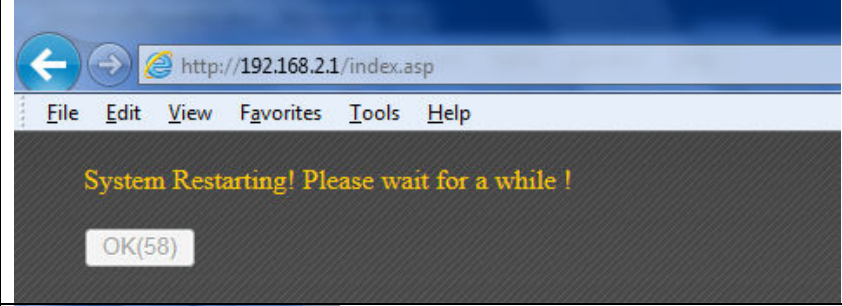
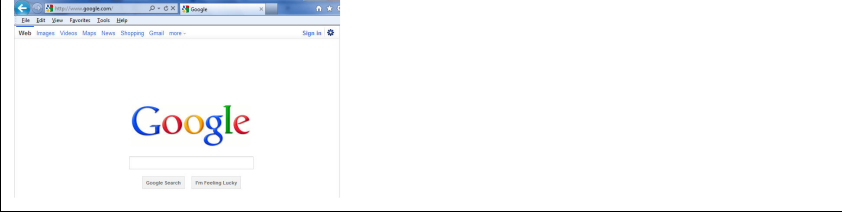
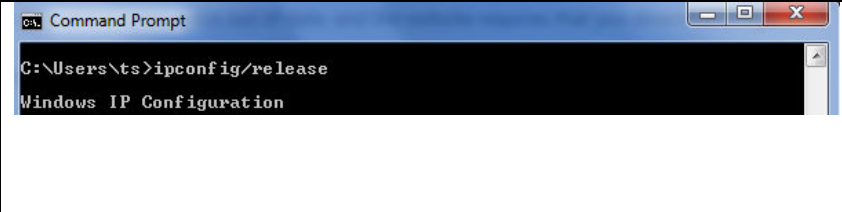

Put a check on the check box of “Enable Static Routing”. Click on Apply.

Save settings successfully!

You may press CONTINUE button to continue configuring other settings or press APPLY button

CONTINUE **APPLY**

Click on Apply for the router save settings and reboot.

 <p>A screenshot of a web browser window. The address bar shows 'http://192.168.2.1/index.asp'. The menu bar includes 'File', 'Edit', 'View', 'Favorites', 'Tools', and 'Help'. The main content area displays the message 'System Restarting! Please wait for a while !' in yellow text on a dark background, with an 'OK(58)' button below it.</p>	<p>In 60 seconds, the router will work as Access Point Station Infrastructure.</p>
 <p>A screenshot of the Google search homepage. The Google logo is centered, with a search input field and 'Google Search' and 'I'm Feeling Lucky' buttons below it.</p>	<p>Verify if your Ethernet computer has Internet. If your Ethernet computer has Internet, you can connect other ethernet device like xBox to the LAN of Edimax router. The Station Infrastructure mode setup is completed.</p>
 <p>A screenshot of a Windows Command Prompt window. The text shows the command 'C:\Users\ts>ipconfig /release' and the output 'Windows IP Configuration'.</p>	<p>Troubleshooting tips: Sometimes in order for your computer get the IP address from your wireless router, you need to go into cmd prompt and type “ipconfig /release” hit Enter, type “ipconfig /renew” hit Enter key.</p>
 <p>A screenshot of a Windows Command Prompt window. The text shows the command 'C:\Users\ts>ipconfig /renew' and the output 'Windows IP Configuration'.</p>	<p>To go into cmd prompt: For Windows XP, click on Start -> Run, enter “cmd” hit OK. For Windows Vista/Windows 7, click on Start, go to the box of “Search programs and files” enter “cmd” hit Enter key. For other devices like xBox, you can reboot the device.</p>