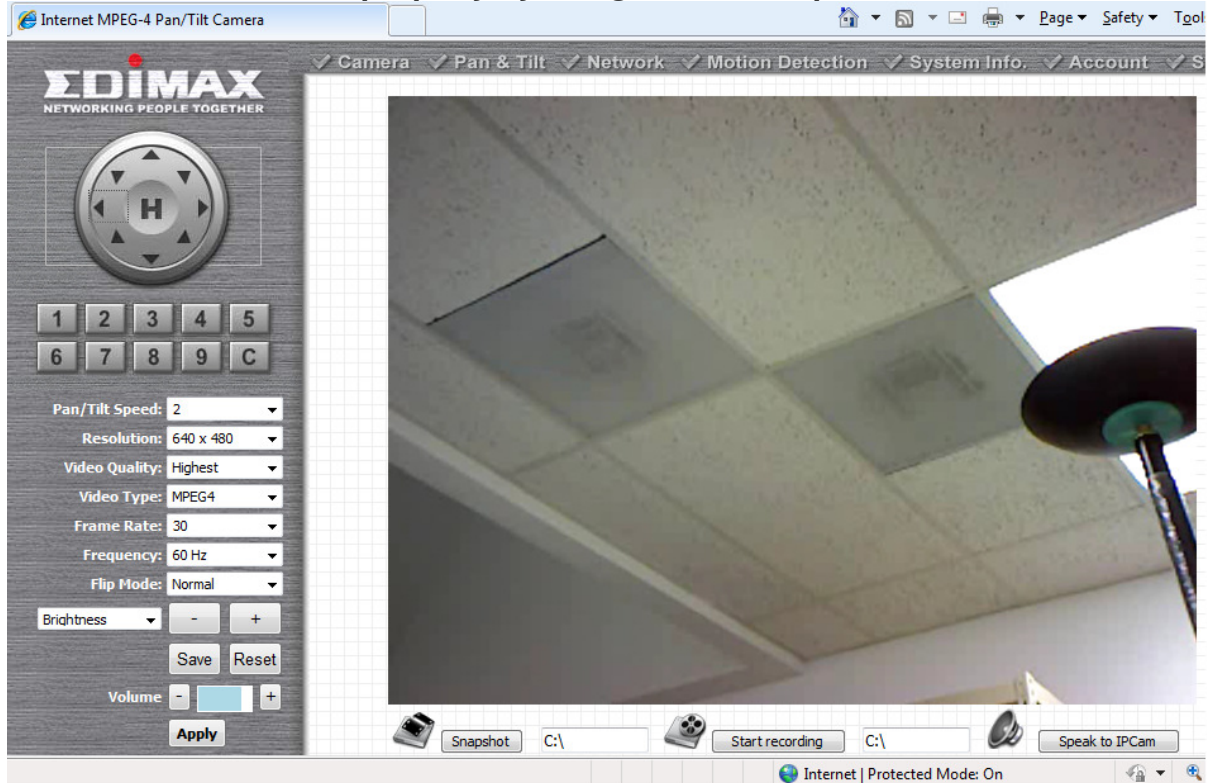


Why my IC-7000PTn v2.0 camera can pan perfectly but tilt does not work?

Symptom

IC-7000PTn can not tilt properly by using the control panel.



There is a gap between arms of IC-7000PTn and its head.



The gap cause the lose of holding power of the arms then cause the Pan-Tilt failed to move up/down.

Solutions:

Use hand to push both arms firmly to eliminate the gap. You may hear a clip sound. That will make the arm get into the right position to have the power move up/down the Pan-Tilt Head.