

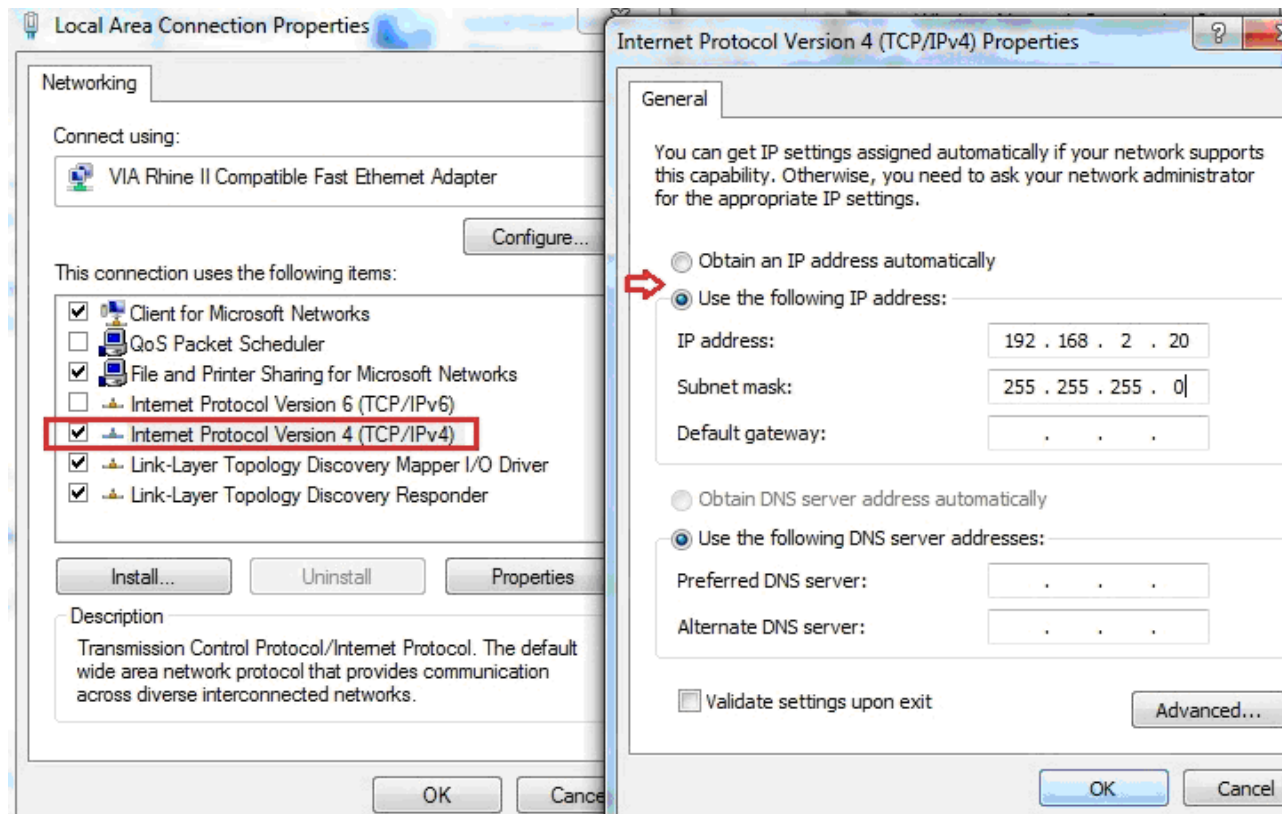
How to login the configuration page of Edimax Wireless Access Point

Use one Ethernet network cable to connect your computer to the LAN port of Wireless Access Point.

For Windows 7, click on Start >> go to the box of "Search programs and files", type in "ncpa.cpl" hit Enter.

For Windows XP, click on Start >> go to Run >> type in "ncpa.cpl" hit OK.

A new window pops up. You are in "Network Connection" window. Right click on "Local Area Connection" and click on Properties. Below is a screen shot from Windows 7.



Double click on "Internet Protocol Version 4 TCP/IP". Select the option "Use the following IP address". Enter IP address as 192.168.2.20 and subnet mask as 255.255.255.0.

Click OK button twice to save the setting and exit the Local Area Connection Properties.

Open Internet Explorer, inside the address bar where you usually type in <http://www.google.com> domain name, type <http://192.168.2.1> and press Enter.

Windows prompts and asks for username and password. Type in the username/password to login.

The default username is admin. The password is 1234. Type them in the fields to login. You should see the setup page. If you can not get into the page, maybe you have changed default password. Please enter your password for login. If you can not remember the password, you'll have to reset the EW-7416APn to factory default by pressing the Reset button at the back of EW-7416APn for 20 seconds. That will erase all the setting and restore the factory default settings.