

# How to view Edimax IC-3015Wn from Internet

Thanks for purchasing Edimax IP Camera.

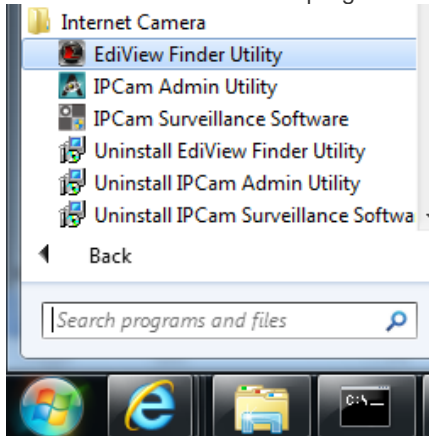
Edimax IP Camera IC-3015Wn can be viewed not only in local network but also can be viewed remotely from Internet.

However, to view it from a remote location, you need to do some additional configuration. You might have a broadband router in your local network. The broadband router works like a firewall and can block access from Internet. Therefore, to allow the access to the IP Camera from Internet, you'll need to configure the router to allow the access. Most routers provide "Port Forwarding" setting so the request can be forwarded to the specified IP camera. The way to configure the port forwarding varies among different routers. Please check the user manual of your router for more detail.

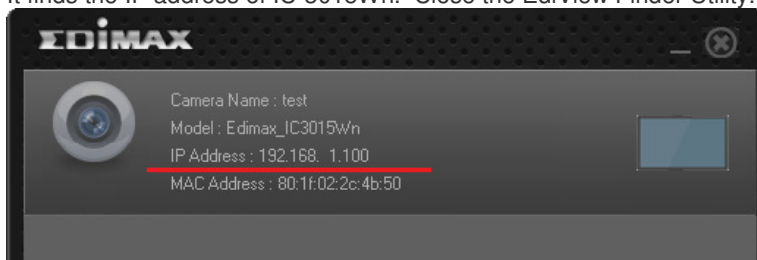
© 2012 Edimax Computer  
3350 Scott Blvd., Building #15  
Santa Clara, California 95054, USA  
Phone 408-496-1105 • Fax 408-980-1530  
[www.edimax.us](http://www.edimax.us)

### Step 1. Find out the IP address of your camera.

Click on Start. Click on "All programs". Under Internet Camera, click on EdiView Finder Utility.

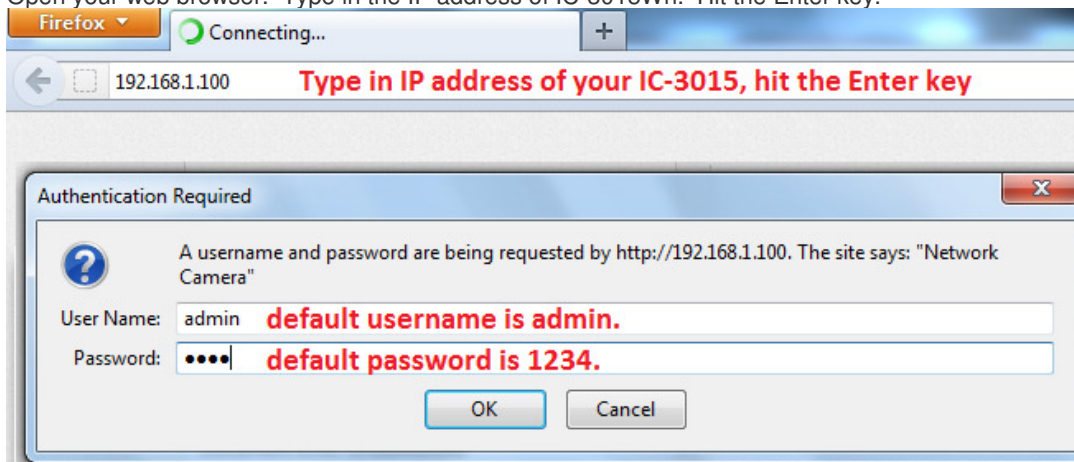


It finds the IP address of IC-3015Wn. Close the EdiView Finder Utility.



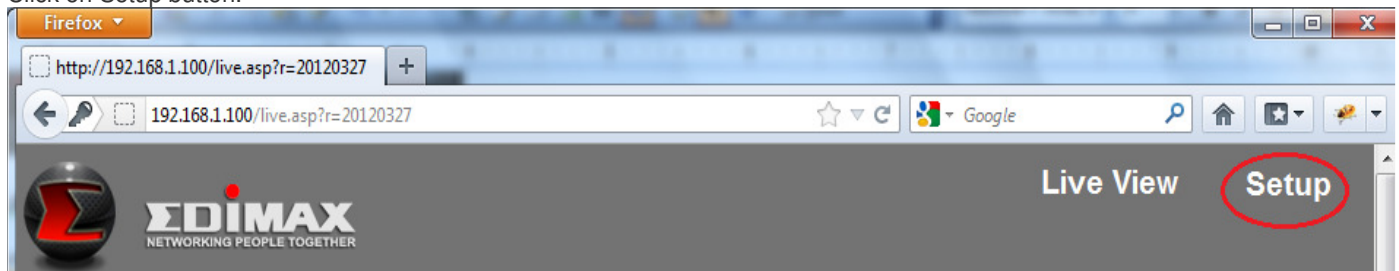
### Step 2. Login to the setup page of IC-3015Wn.

Open your web browser. Type in the IP address of IC-3015Wn. Hit the Enter key.



Enter the username and password. Hit OK. If your web browser asks you if you want to save the password, you may save the password.

Click on Setup button.



Step 3. We recommend you use Static IP address for IC-3015Wn.

Firefox

http://192.168.1.100...etup.asp?r=20120327

192.168.1.100/setup.asp?r=20120327

**EDIMAX**  
NETWORKING PEOPLE TOGETHER

- **Basic**
- **Network**
- Wireless
- Dynamic DNS
- Date & Time
- Users
- UPnP
- Bonjour
- Language
- **Video**
- **Events**
- **System**
- **Status**

**Network**

Network Type: Static IP

**Static IP**

IP: 192.168.1.100

Netmask: 255.255.255.0

Gateway: 192.168.1.1

Primary DNS: 192.168.1.1

Secondary DNS: 8.8.8.8

HTTP Port: 80

Apply

Step 4. Find out the Public IP address of your network.

Visit the web site <http://www.whatismyip.com> then take a note of your IP address. To remote view the IP camera from Internet, you will need to use that IP address.

What Is My IP Address - Shows Your IP Address - Windows Internet Explorer

http://www.whatismyip.com/

WhatIsMyIP.com

WIMI

FORUM SPEED TEST IP LOOKUP

TRACE AN EMAIL CHANGE YOUR IP

What Is My IP Address - WhatIsMyIP.com

**Your IP Address Is:**

XXX.XXX.XXX.XXX

## Step 5. Login to the router configuration web page.

We used Edimax wireless router in this example. The router has IP address 192.168.1.1. Login to the setup page at <http://192.168.1.1>

Your router may use different IP address and have different setup for Port Forwarding.

In the Edimax router's setup page. Go to General Setup >> Click on Advanced Settings >> Click on "Port Forwarding".

Enable the check box of "Enable Port Forwarding".

In the box of Private IP, enter the IP address of IP Camera.

In the Port Range, enter 80 – 80. Click on Add. Click on Apply.

The screenshot shows the router's configuration interface. The 'General Setup' tab is active, and 'Advanced Settings' is selected. The 'Port Forwarding' section is highlighted with a red box. Below it, the 'Enable Port Forwarding' checkbox is checked. A table for port forwarding is shown with the following entries:

Private IP	Computer name	Type	Port Range	Comment
192.168.1.100	<< ----- Select ----- >>	Both	80 - 80	IP Camera

Below the table, there are 'Add' and 'Reset' buttons. The 'Add' button is circled in red. Below the table, there is a 'Current Port Forwarding Table' section with columns: NO., Computer name, Private IP, Type, Port Range, Comment, and Select. Below this table are 'Delete Selected' and 'Delete All' buttons. At the bottom of the page, the 'Apply' button is circled in red.

After you click on Apply, your router may reboot by itself. Wait for a few seconds for the router regains Internet.

## Final step. Access the IP Camera from Internet.

From a computer on Internet (You can ask your friend to do this), open web browser. Enter the public IP address that you obtained on step 4 above. Like <http://xxx.xxx.xxx.xxx>.

The screenshot shows a Firefox browser window. The address bar contains 'http://74.125.224.' with a warning icon and a red note: '(Enter the public IP address of your network)'. An 'Authentication Required' dialog box is open, displaying the following information:

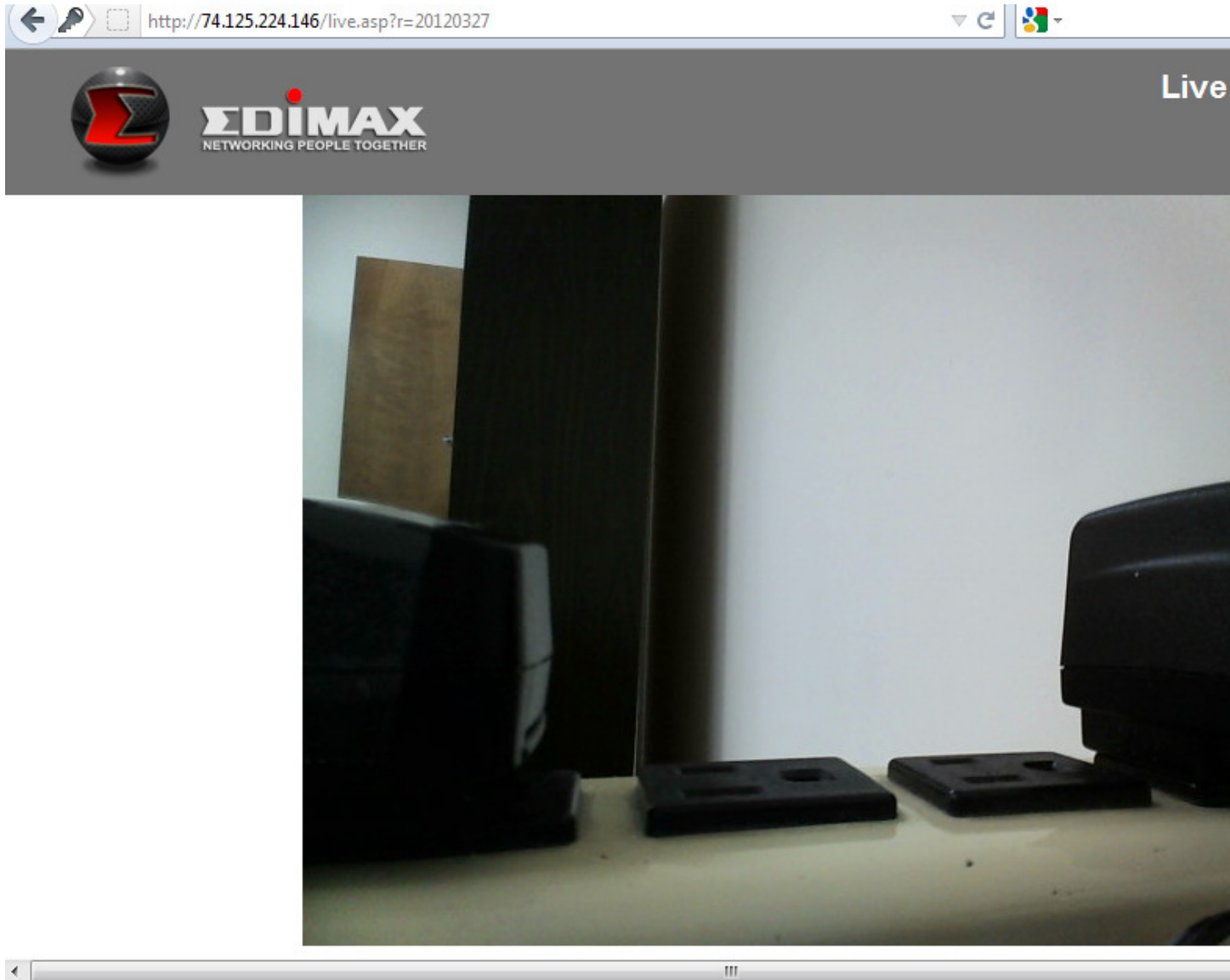
A username and password are being requested by http://. The site says: "Network Camera"

User Name: admin

Password: [masked] Enter the password of your IC-3015Wn

Buttons: OK, Cancel

After the correct username and password are entered, you can view the video from the IC-3015Wn camera.



**Congratulations. The setup is complete.**

**Note: Some ISP blocks port 80. If your ISP blocks port 80, you need to use different port on IC-3015Wn. Below screen shows IC-3015Wn uses port number 8101.**

- **Basic**

- **Network**

- Wireless
- Dynamic DNS
- Date & Time
- Users
- UPnP
- Bonjour
- Language

- **Video**

- **Events**
- **System**
- **Status**

### Network

**Network Type:** Static IP ▾

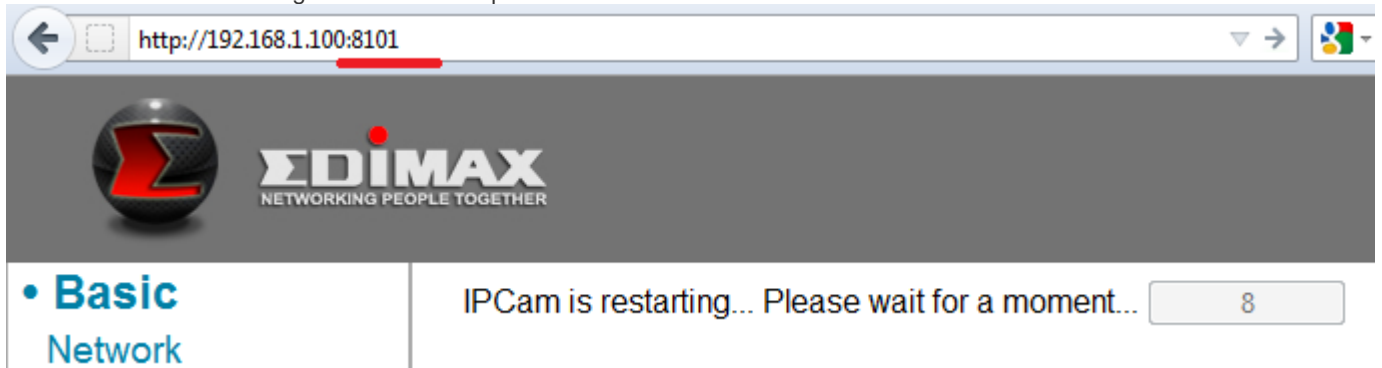
### Static IP

**IP:** 192.168.1.100  
**Netmask:** 255.255.255.0  
**Gateway:** 192.168.1.1  
**Primary DNS:** 192.168.1.1  
**Secondary DNS:** 8.8.8.8  
**HTTP Port:** 8101

Apply

After you click on Apply, the message shows IPCam is restarting. Type in the port number after the IP address of IC-3015Wn.

You need to re-enter the login username and password to view the camera.



Login to the router's setup page. Setup the port forwarding for port 8101 to IC-3015Wn.

