

How to install the driver of EW-7811Un

Introduction

We strongly recommend you **disconnect the Ethernet network cable** from your computer before you insert the EW-7811UN to your computer cause it may install an incorrect wireless driver automatically from Windows Update.

First of all, you insert the EW-7811Un wireless adapter to a USB port in your computer.

If your computer shows “New Hardware Found Wizard”. click on Cancel to close the wizard.

Secondly, you insert the CD disk that came with EW-7811Un to your computer..

Usually the CD disk autorun executed automatically and provide the installation instruction. You may follow its instruction to complete the installation. It will install both the driver and the Edimax Wireless Utility for you.

However, if you encounter any problem with the CD disk, or you just want to install the driver for the wireless adapter and you do not want to install the Edimax Wireless Utility. You may refer following procedures.

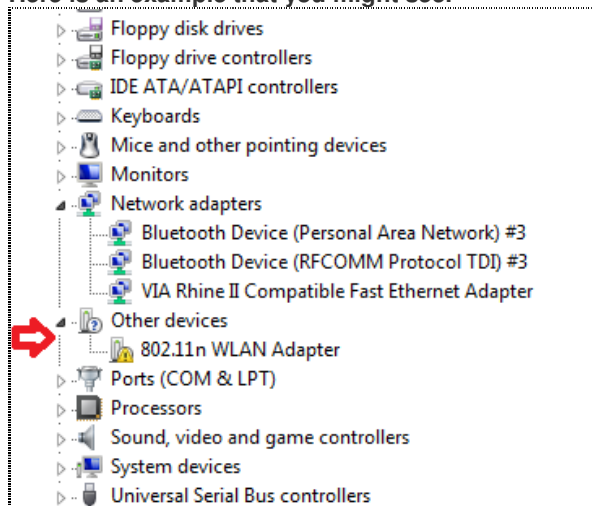
Procedure to install the wireless driver only.

Step 1, check the status in Device Manager.

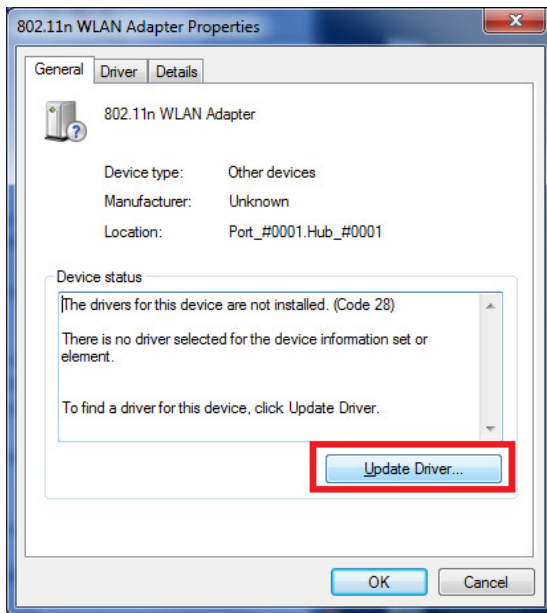
To go to Device Manager in Windows XP, you right click on “My Computer” and go to “Properties”. Go to Hardware. Go to Device Manager.

To go to Device Manager in Windows 7, you click on Start button, right click on “computer”, and go to “Properties”. Click on Device Manager in the left menu.

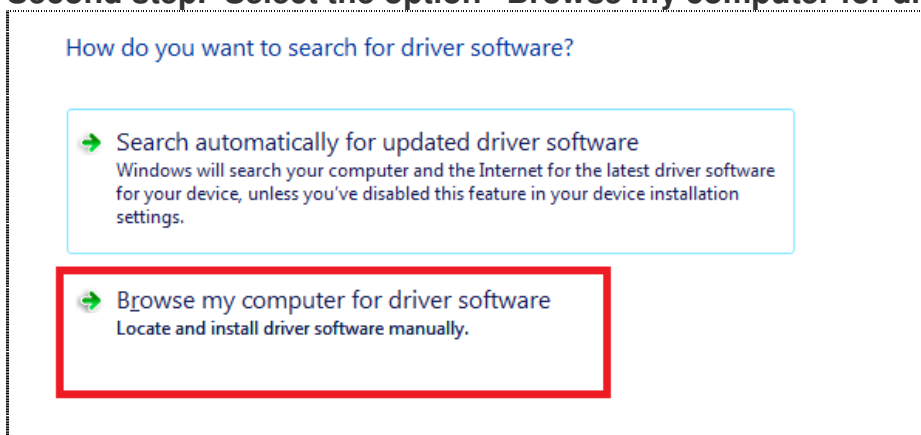
Here is an example that you might see.



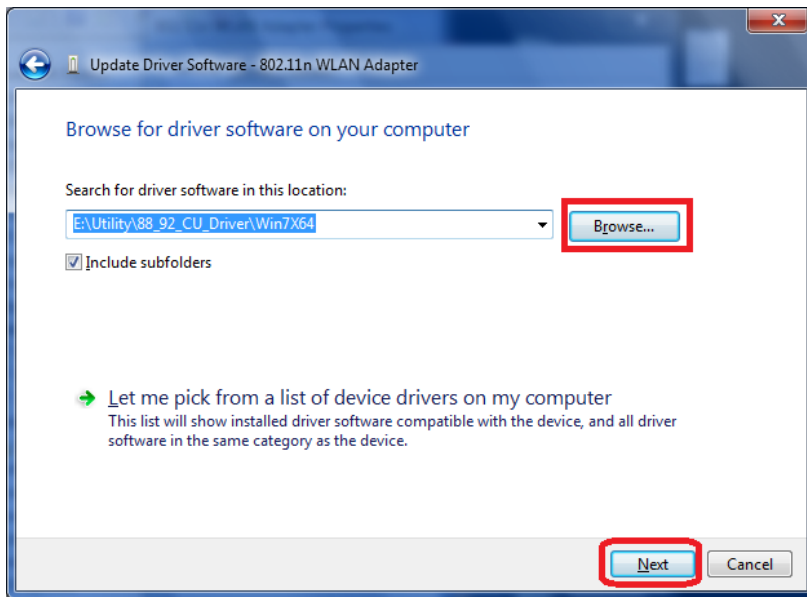
Go into the “802.11n WLAN Adapter” and click on “Update Driver”



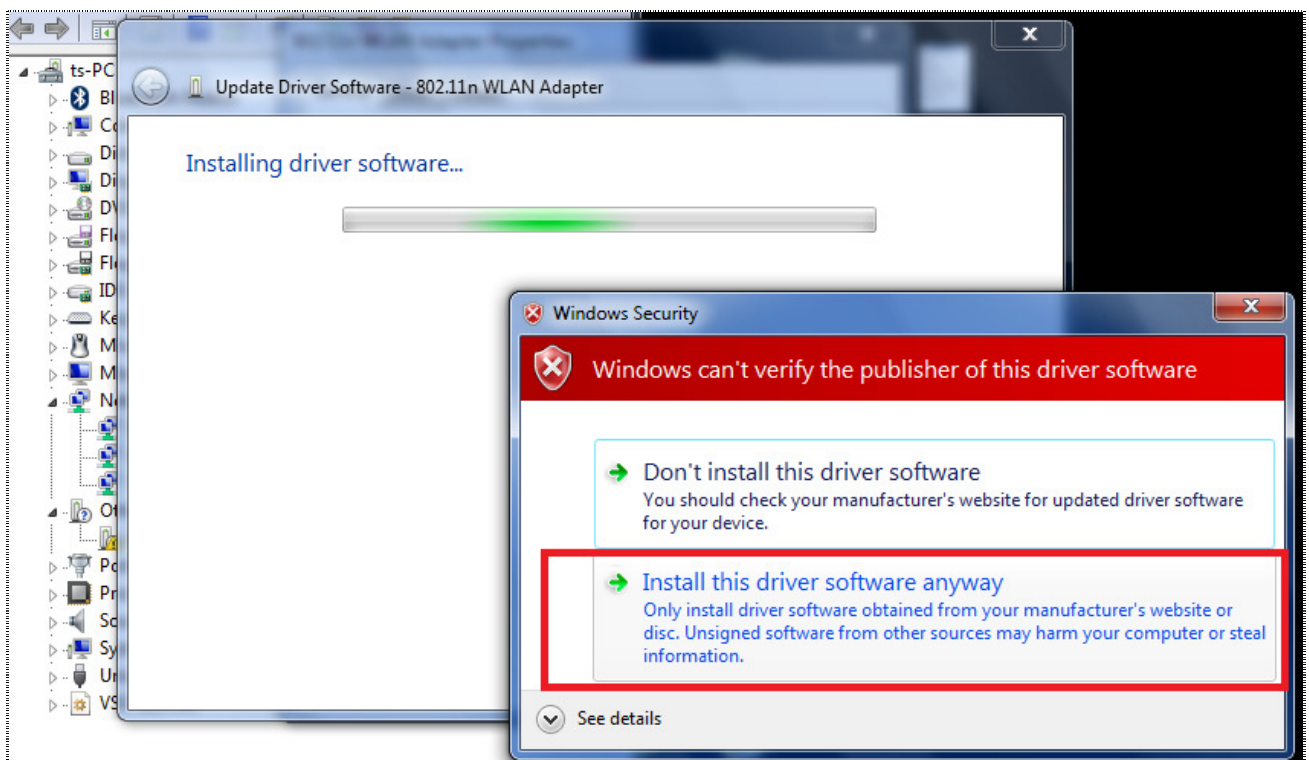
Second step. Select the option “Browse my computer for driver software”.



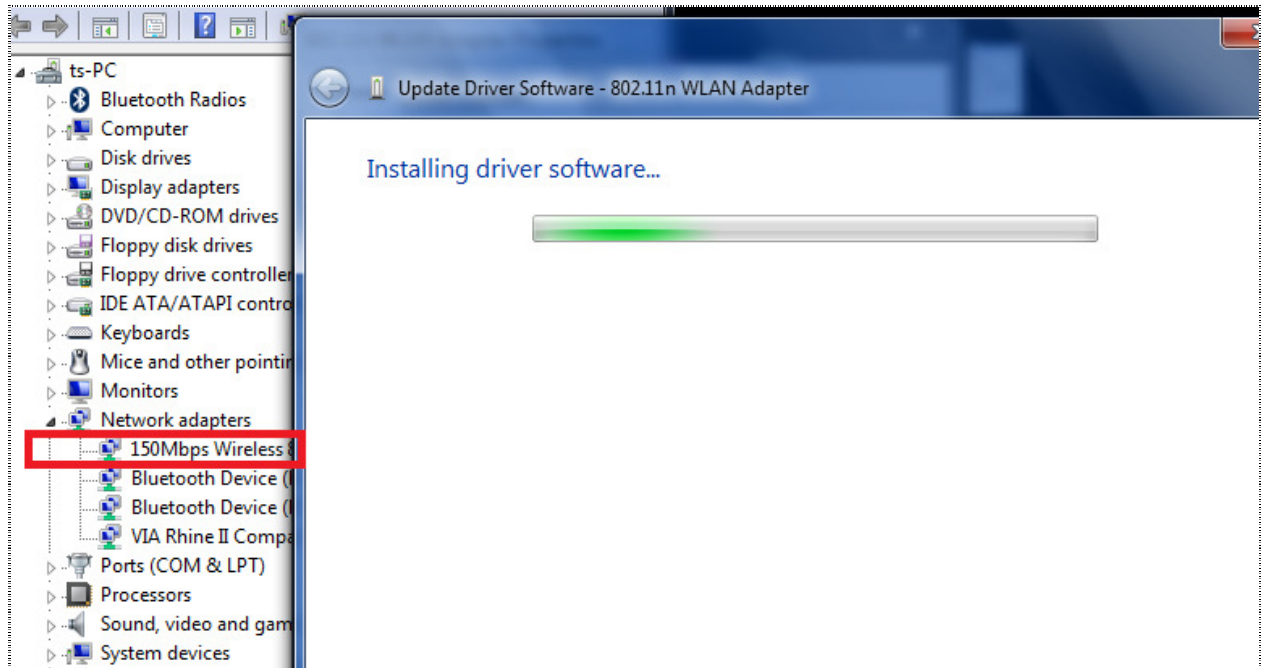
Third step. Click on “Browse” button. Locate the CD drive. Go into the Utility folder. Go into the 88_92_CU_Driver folder. Then go into the folder for your Windows Operating System. In this example, we select Windows 7 64bit.



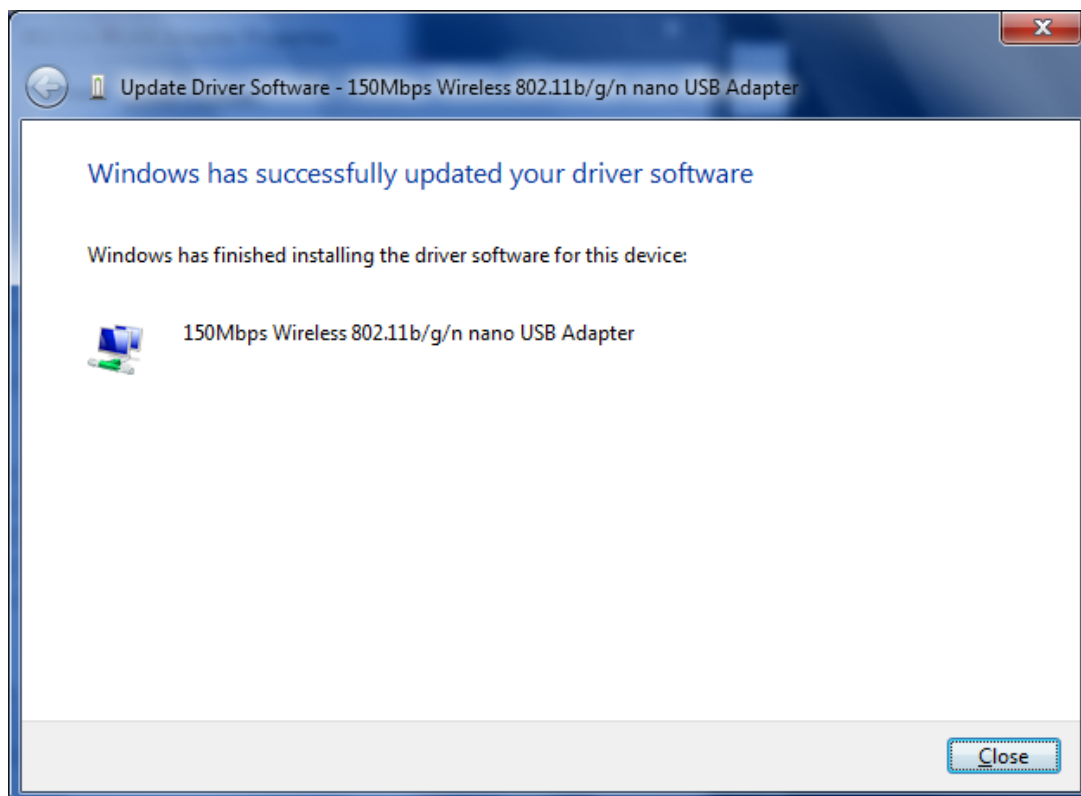
Fourth step, click on the option “Install this driver software anyway”.



Next, the installing starts up. You will see the 150Mbps Wireless Adapter showing under “Network adapters” in device manager.



The success message appeared.

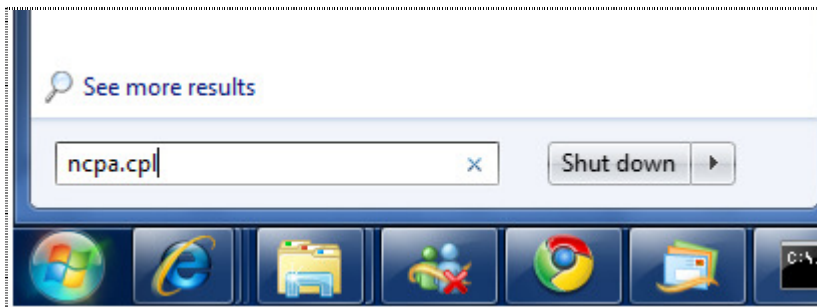


Now you can close Device Manager and other window.

Fifth step, make the wireless network connection work.

For Windows XP, click on Start, go to “Run”, enter “ncpa.cpl” hit OK. You will get the Network Connection Window.

For Windows Vista and Windows 7, click on Start., in the box of “Search Programs and Files”, enter “ncpa.cpl” hit Enter key.



In the Network Connection window, double click on the “Wireless Network Connection” then select your wireless network to connect.