

How to install EW-7811Un nano wireless adapter in a Windows XP system with the mini CD disc?

Put the Edimax CD disc into CD ROM Drive. If there is a prompt message to open the disc, click on Exit to close the prompt message.

Section A. Install Driver while Windows detect the new hardware.

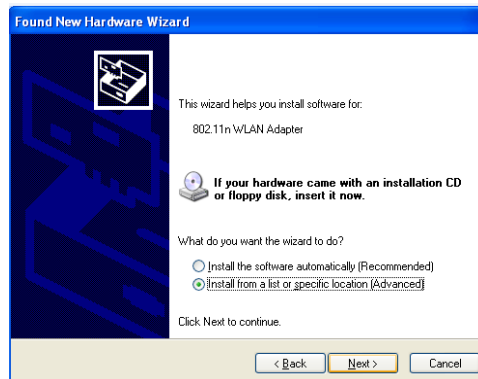
1. Insert the nano wireless adapter into the USB port of Windows XP computer.
2. In a few seconds, the “**Found New Hardware Wizard**” shows up.

If the “Found New Hardware Wizard” does not show up, please refer [Section C](#).

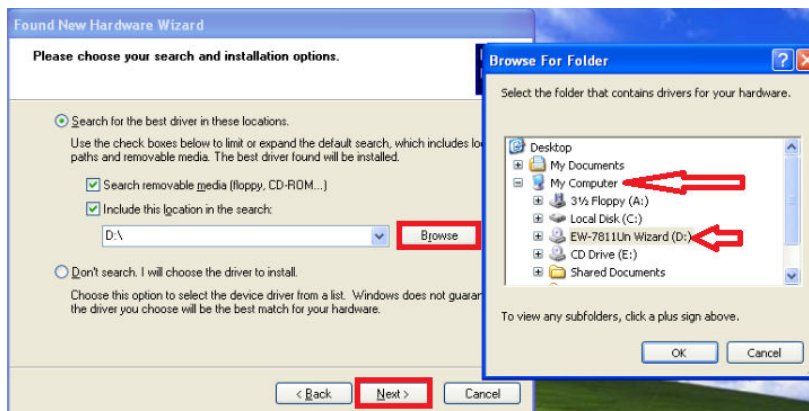
Click on the third option of “**No, not this time**”.



3. Click on the second option of **Install from a list of specific location [Advanced]**



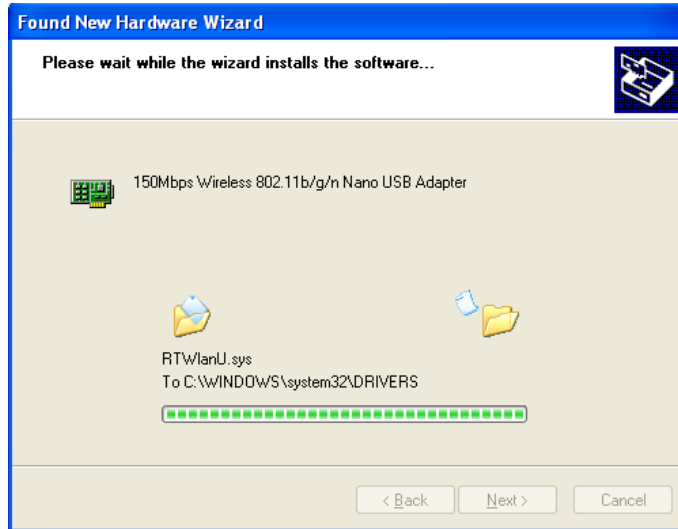
4. Check the box of **Include this location in the search**. Click on “**Browse**”



In the Browse for folder window. Locate your CD ROM Drive which has EW-7811Un CD disc.
Click on the plus + sign to expand the folders under the CD ROM drive.
Click + on \Utility folder. Click + on \RTWLANU_Driver folder. Click + on \WinXP folder. Click on OK (or Open) button.

While you are back to the New Hardware Found Wizard window, click on Next button.

5. Windows is installing the driver.

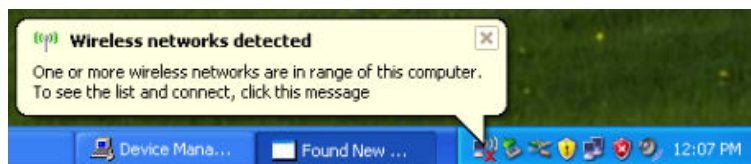


6. Click on the Finish button to close the window. The driver is installed.

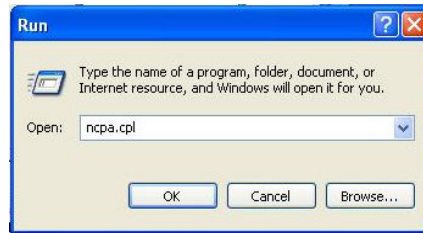
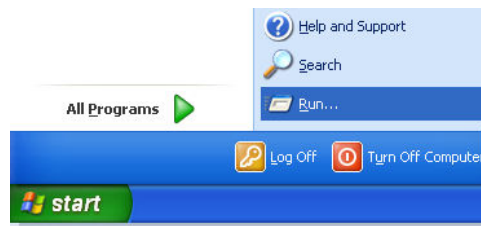


Section B. Search for available wireless networks.

1. You may see a prompt saying "Wireless networks detected" in the system tray. There is a red X on the WiFi icon on system tray. Click on that prompt message then you will go to Next step.



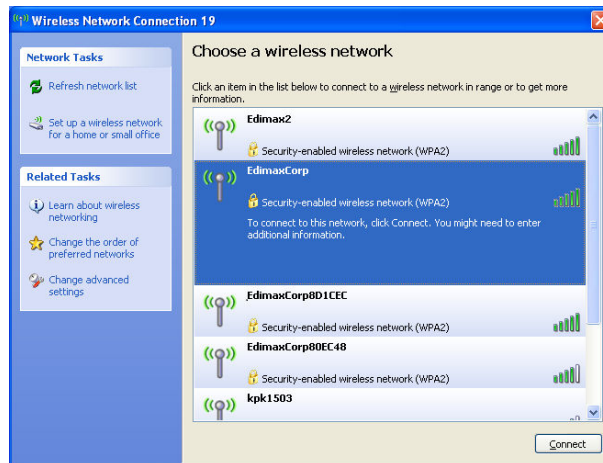
If you do not have that prompt window, no worry. Please click on Start button. Click on Run. Type in “ncpa.cpl” hit Enter key.



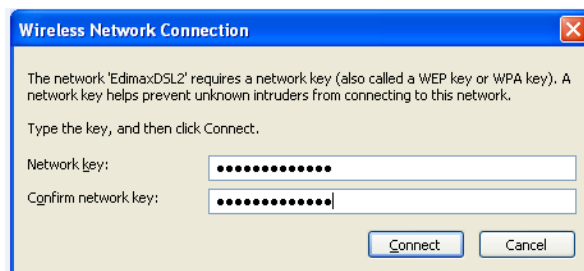
You will get into the Network Connection Window. Find the Wireless Network Connection icon. Right click on it and choose the option “View Available Wireless Networks”.



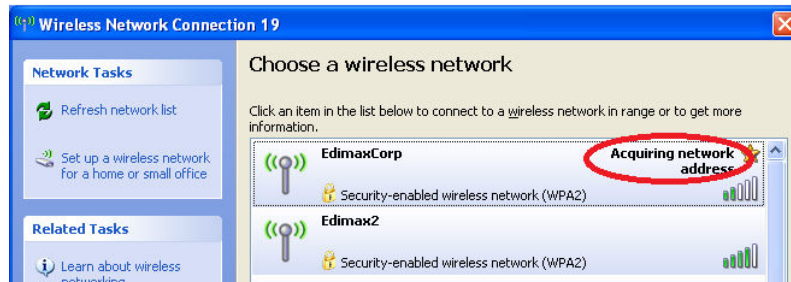
2. Windows XP detects available wireless networks. Select your WiFi network. Click on “Connect” button.



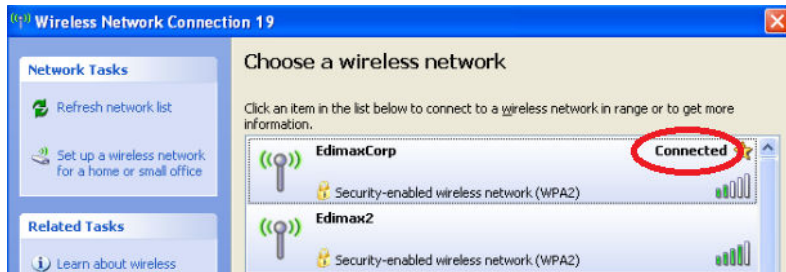
3. If your Wifi network has a wireless security password, type in your password in the box of Network Key and again in the box of Confirm Network Key. Please note the wireless password is case sensitive. Click on Connect button.



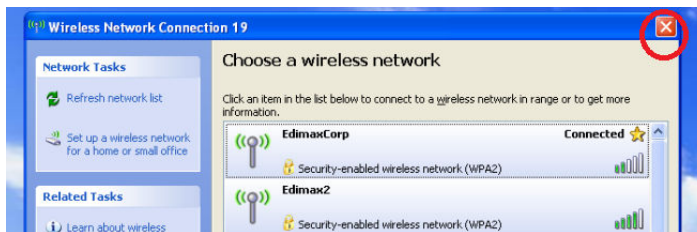
4. Connection status indicates acquiring network address.



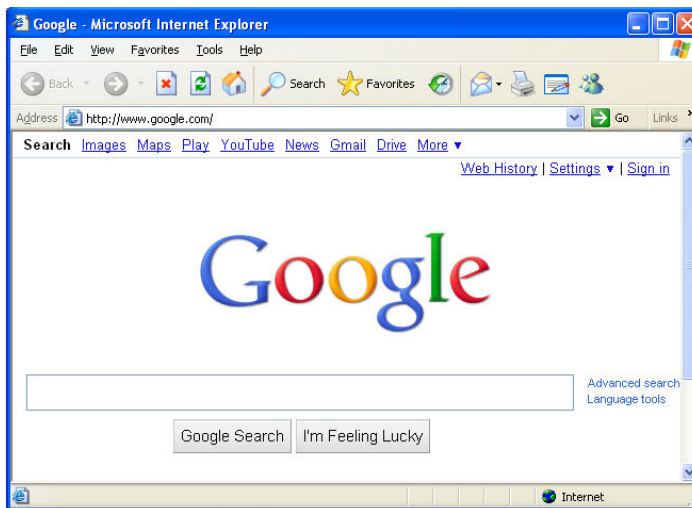
In a few seconds, the message indicates connected.



Click on the Red X on the top left corner to close this window.



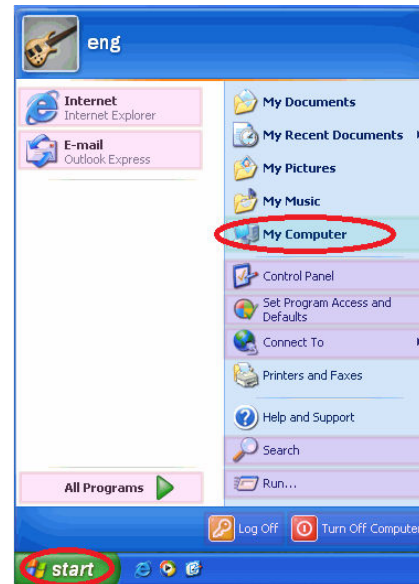
5. Open your web browser like IE to access Internet. If you can browser Internet, the setup is completed.



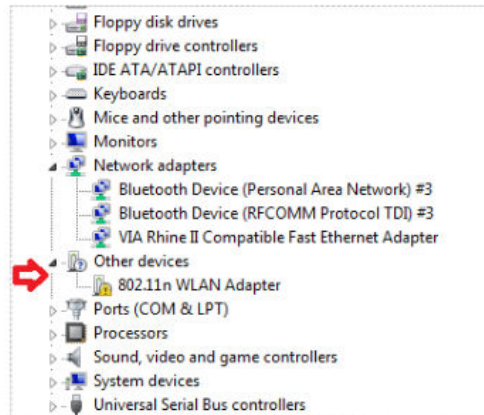
Congratulations!

Section C: Install driver in Device Manager

Click on Start button. Right click on Computer go to Properties.
Click on Hardware tab. Click on Device Manager.



You may see a category called “Other Devices” and there is an 802.11n WLAN Adapter under “Other Devices”.



Right click on 802.11n WLAN Adapter and click on “Update Driver”. You will get the Hardware Found Wizard. Now you can follow the procedures in Section A to install the driver from CD disk.