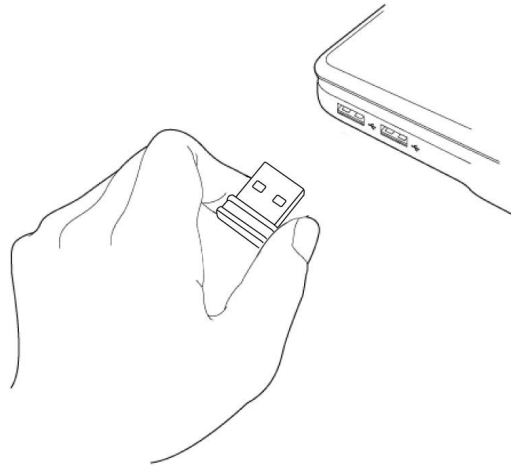


How to install Edimax wireless adapter in Windows 8/Windows 8.1

This instruction can be applied on EW-7811Un, EW-7822UAC, EW-7722UTn v2.0, and EW-7622UMn. Windows 8/Windows 8.1 provides built-in driver. You do not need any CD disc. The driver will be installed automatically.

Section A: Plug in the USB Wireless Adapter to your computer

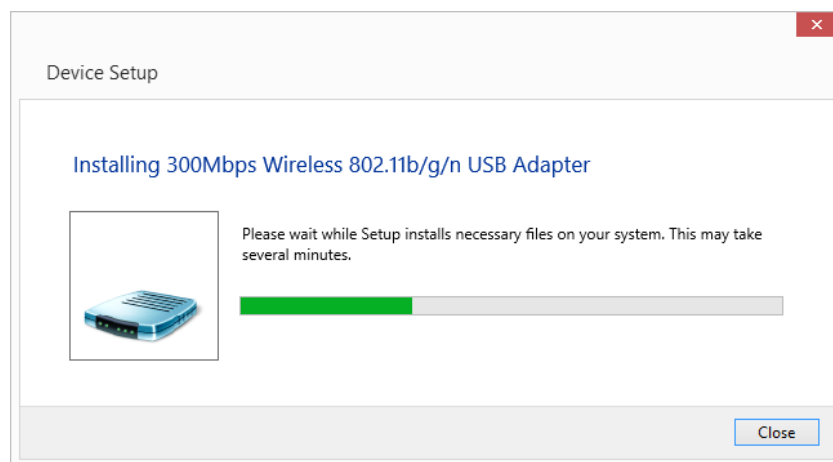
Insert the USB wireless network card into an empty USB port of your computer when computer is switched on. Never use force to insert the card, if you feel it's stuck, flip the card over and try again.



Section B: Install Driver automatically

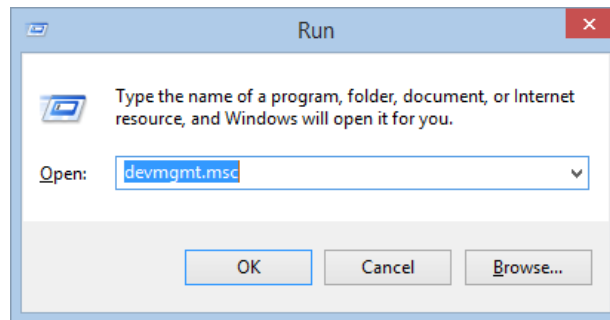
Once the network adapter is plugged in, a **Found New Hardware** window will pop-up.

Windows 8/Windows 8.1 will search the driver and load the driver automatically for Edimax Wireless Adapters.



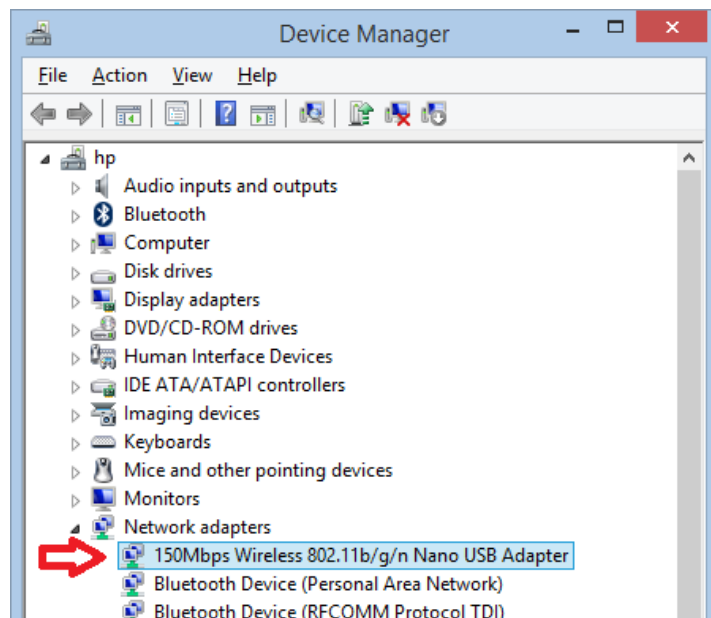
Section C: Verify the driver has been installed in Windows 8/Windows 8.1

1. Hold the Windows key on your keyboard and press the letter r. You will get the Run window. Type in “devmgmt.msc” hit Enter key.

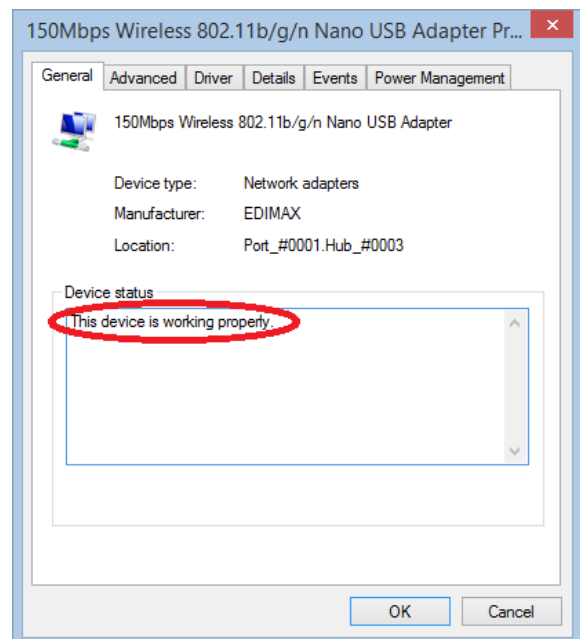


You are in the “**Device Manager**” window.

2. Inside Device Manager, click on **Network Adapters** to expand the list under it. You should see the Edimax Wireless adapter has been included.



3. Left click twice on the **Edimax Wireless adapter** to get into the Properties windows. It should say “This device is working properly”.



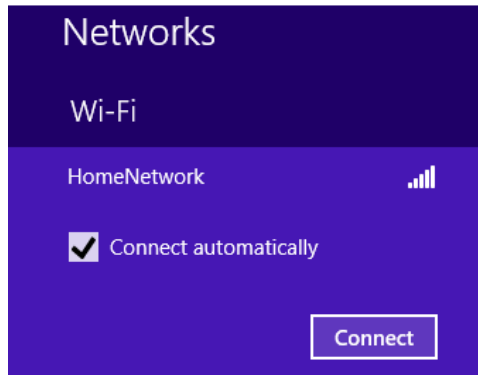
4. Click on **OK** to close the Properties window. Click on **OK** to close Device Manager.

Section D: Make Wi-Fi connection in Windows 8/Windows 8.1

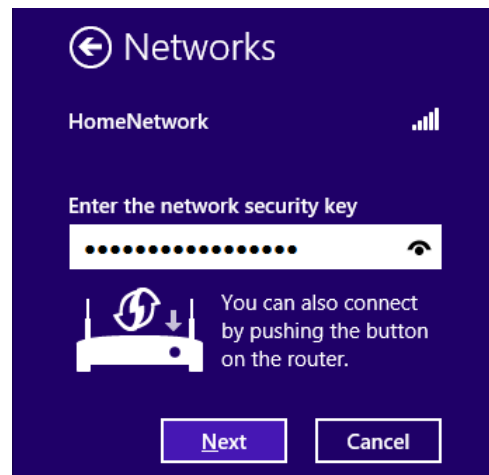
1. Left click mouse on (📶, 🖨️, 🖱️ or 🖱️) in the right corner of the system tray.



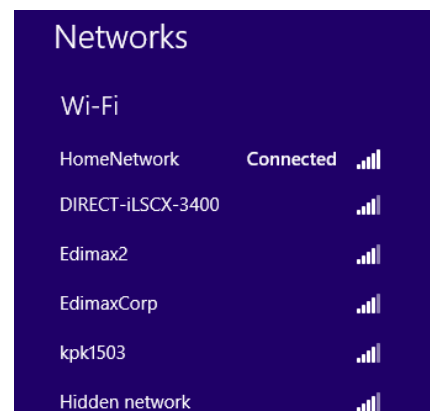
2. Windows 8 shows a list of available wireless networks. Select your wireless network. Click on “Connect”.



If your wireless network is secured with a wireless security password, you will be prompted to enter the network security key.



After you enter the correct wireless security password, click on **Next**. You will be connected to your wireless network. Open your browser to make sure you can access Internet.



Congratulations! You have installed the Edimax Wireless adapter successfully.

Your Windows 8 will automatically connect to Wi-Fi network while you turn it on.