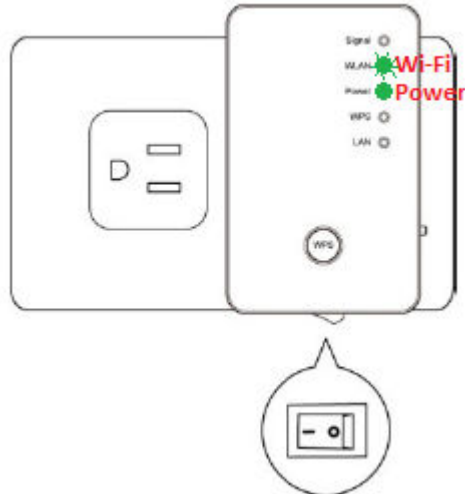


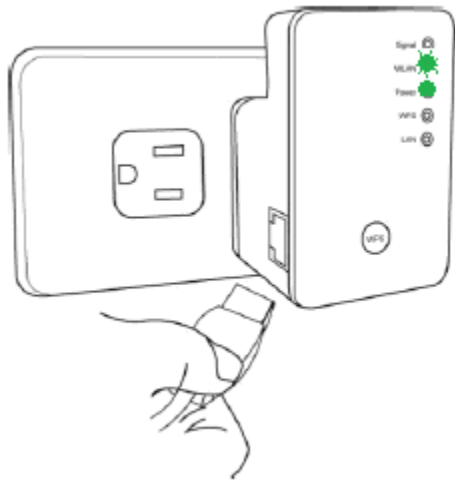
Q: I just received my EW-7438RPn, but I can not use the browser to do the setup.

Solution:

1. Power on the EW-7438RPn. Wait for the green WiFi LED blinks. This may take 1 minute.



2. Connect the Ethernet cable to LAN port of EW-7438RPn.

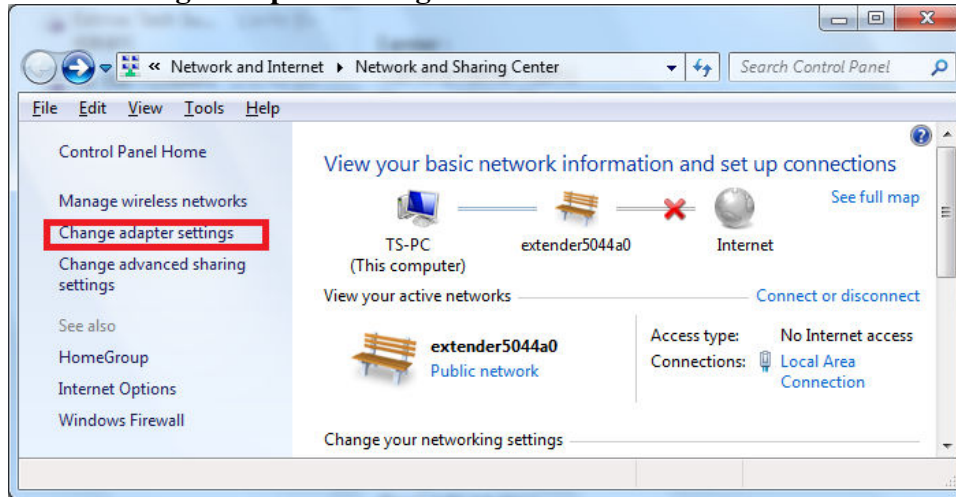


3. Connect the Ethernet cable to LAN port of your computer.

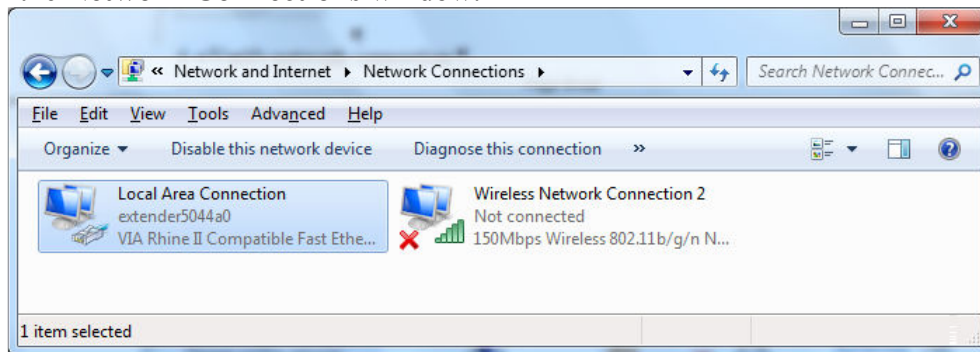


4. Verify network connection.

Go to **Control Panel**. Go into **Network and Internet**. Go into **Network and Sharing Center**. Click on **Change Adapter Settings** on the left.

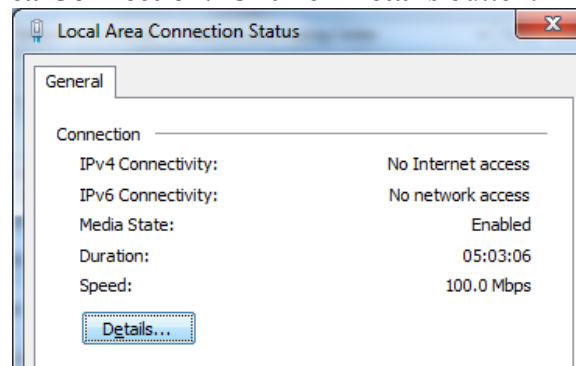


You are in the **Network Connections** window.



If you are using Ethernet cable to connect the computer with EW-7438RPn, and you have a Wireless Network Connection icon, we suggest you right click on the Wireless Network Connection icon then click on “Disable”. This will temporarily disable your wireless connection. Later on, while you need to have the wireless function back, you can right click on Wireless Network Connection and click on “Enable”.

Double click on **Local Area Connection**. Click on **Details** button.



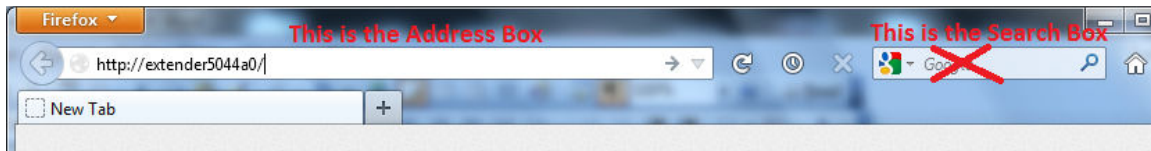
DHCP Enabled	Yes
IPv4 Address	192.168.2.100
IPv4 Subnet Mask	255.255.255.0
Lease Obtained	Wednesday, October 03, 2012 2:17:23 P
Lease Expires	Saturday, October 01, 2022 2:17:24 PM
IPv4 Default Gateway	192.168.2.2
IPv4 DHCP Server	192.168.2.2
IPv4 DNS Server	

The IPv4 address should be 192.168.2.100 and IPv4 default gateway should be 192.168.2.2. Click on Close button twice. Go back to the original **Network Connections** Window.

- Open your web browser. It is normal that your computer does not have Internet because your computer is connected to the extender which does not wirelessly connect to your main network yet.

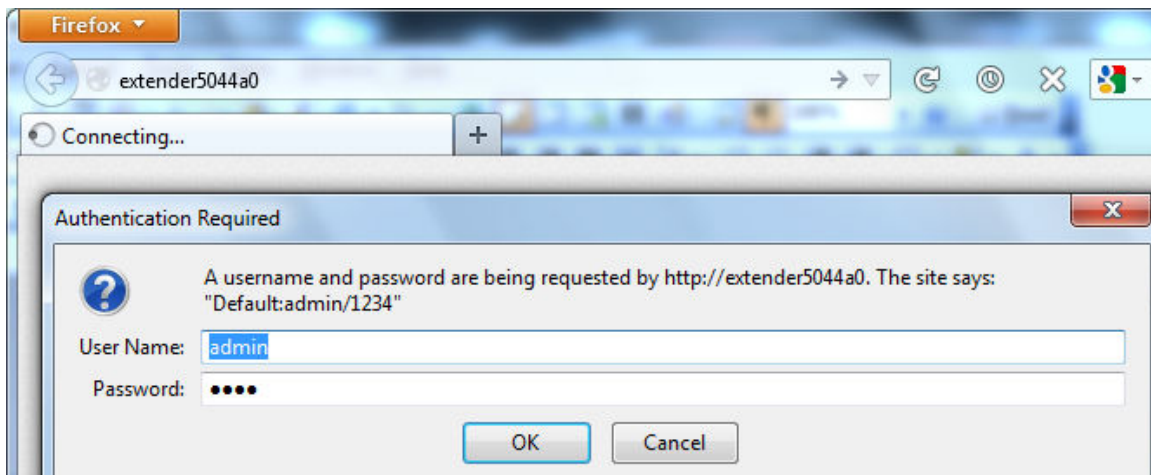
Type in your extender's access address in the Address Box. You can find the address from the Access Key card.

Note: Do not enter the address into the Search box.



If you the extender address does not work for you, you may use <http://192.168.2.2> for the extender address.

- The default username is admin.
The default password is 1234.
Click on Login or OK button.



- Congratulations. You are in the iQsetup page of EW-7438RPn.

You can start up the setup process and have EW-7438RPn connect to your main wireless network.

Firefox extender5044a0/index.asp Universal Wi-Fi Extender

EDIMAX
NETWORKING PEOPLE TOGETHER

English

iQ Setup

Please connect this device to one of the following Wi-Fi networks.

Select	SSID	Channel	Encryption	Signal
<input type="radio"/>	EdimaxCorp	11	WPA2-PSK	85
<input type="radio"/>	kpk1503	4	WPA2-PSK	81