

EDIMAX COMPUTER INC.

Edimax BR-6258n Nano router

150Mbps Wireless Broadband Router

Universal Repeater

**Extend wireless range
of a wireless router/AP**

© 2011 Edimax Computer
3350 Scott Blvd., Building #15
Santa Clara, California 95054, USA
Phone 408-496-1105 • Fax 408-980-1630

www.edimax.us

Edimax BR-6258n

Congratulations on your purchase of the Edimax BR-6258n. It is currently the smallest wireless router, and we back them up with great technical support. We are committed to making you a success because our success depends on yours.

This is a detailed step-by-step installation instruction for the Universal Repeater mode setup.

Assumptions:

1. You have the Edimax BR-6258n Wireless router.
2. You use Ethernet cable to connect your computer to LAN port (the Yellow port) of BR-6258n.
3. Keep the WAN port (the Blue port) of BR-6258n unplugged.
4. Power on BR-6258n router either by using its power adapter or by using its USB cable with a USB port of the computer.
5. Your main wireless router is powered on. Its DHCP server function is enabled. The main wireless router will give dynamic IP addresses to computers in the network.
6. If your main wireless router has wireless encryption setting, you know the wireless encryption passphrase (also known as network key or password) of your wireless network.

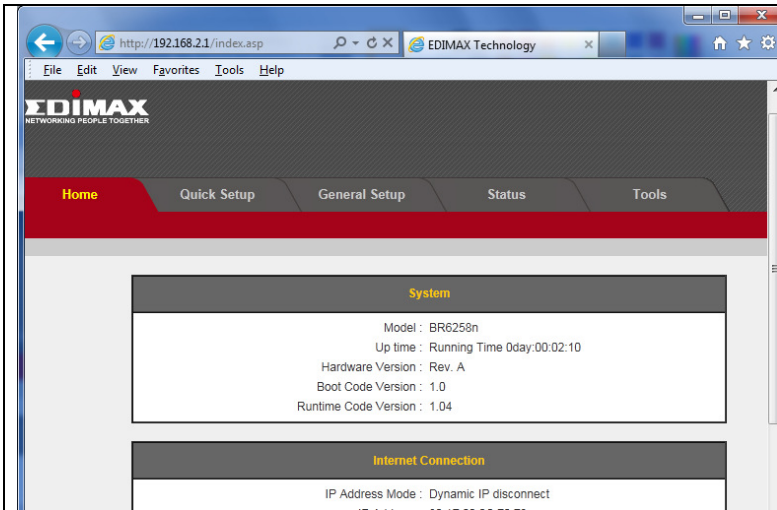


Fig. 1
Open web browser like Internet Explorer.

In the address box, enter http://192.168.2.1 hit Enter.

Enter the default username and password.

Username: admin

Password 1234

Get into the router's configuration page.

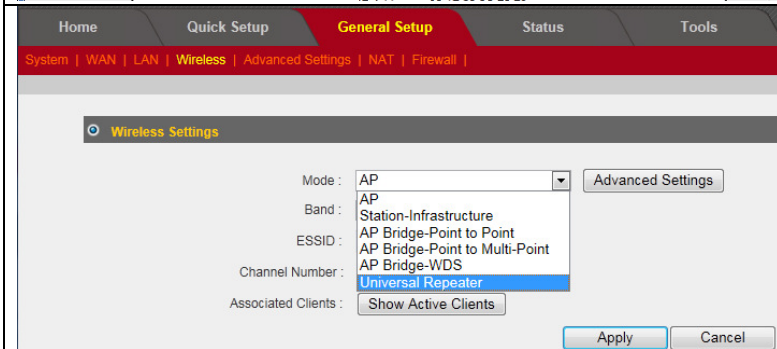


Fig. 2

Click on General Setup in the menu. Click on Wireless.

In the field of "Mode", select "Universal Repeater" as the Mode.

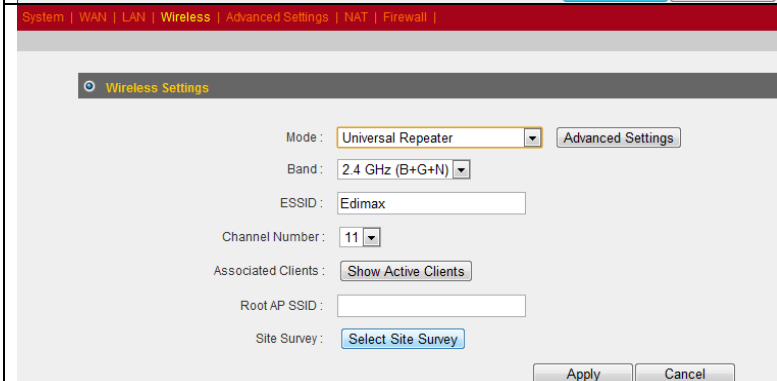


Fig. 3

The button "Select Site Survey" appeared.

Click on the "Select Site Survey" button..

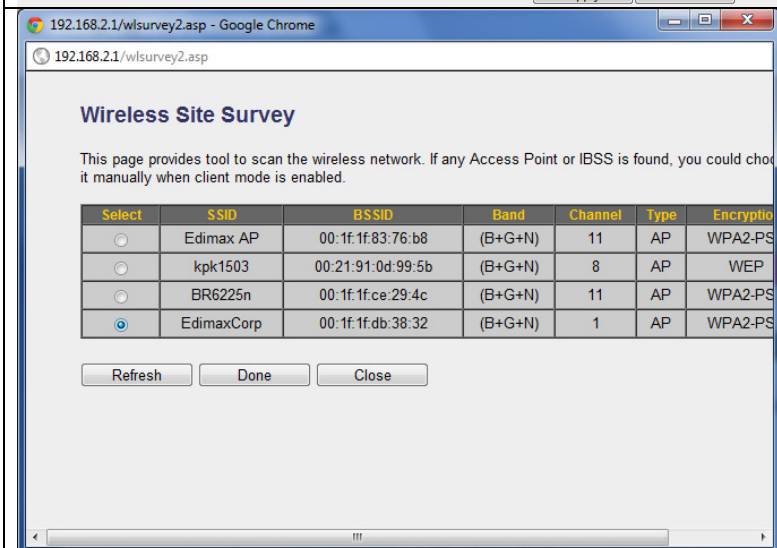


Fig. 4

A new window pops up and shows available wireless networks.

Select your wireless network. Click on Done. The Wireless Site Survey window close automatically..

Wireless Settings

Mode : Universal Repeater

Band : 2.4 GHz (B+G+N)

ESSID : Edimax

Channel Number : 1

Associated Clients :

Root AP SSID : EdimaxCorp

Site Survey :

Fig. 5

The SSID name of your main wireless network appeared in the box of “Root AP SSID”.

In this example, we use “Edimax” as the SSID of the repeater. Later our wireless computers will connect to the repeater which has SSID named “Edimax”.

Click on Apply button.

Save settings successfully!

You may press CONTINUE button to continue configuring other settings or press APPLY button

Fig. 6

Click on Continue button.. We have more configuration to set.

Wireless Settings

Security Settings

Encryption : Disable

Enable 802.1x Authentication

WPA pre-shared key

Fig. 7

Go to Security Settings. The encryption is disabled by default.

If your wireless router has wireless encryption enabled, you need to use the same security password in the repeater. If you are not sure about the encryption passphrase, you may need to check the setting in your wireless router.

Wireless Settings

Security Settings

Encryption : WPA pre-shared key

WPA Unicast Cipher Suite : WPA(TKIP) WPA2(AES)

Pre-shared Key Format : Passphrase

Pre-shared Key : *****

Fig. 8

If your wireless router has options like WPA2-personal, WPA-personal, WPA/WPA2 mixed. Please make sure you select WPA2-personal. Do not use the option of Mixed mode.

Here we enter the pre-shared key (also known as passphrase). Click on Apply

Save settings successfully!

You may press CONTINUE button to continue configuring other settings or press APPLY button

Fig. 9

Click on Continue button. Later we are going to disable router function.

Home Quick Setup **General Setup**

System | WAN | LAN | Wireless | Advanced Settings | NAT | Firewall |

LAN IP

IP address : 192.168.2.1

Subnet Mask : 255.255.255.0

802.1d Spanning Tree : Disabled

DHCP Server : Enabled

Lease Time : Enabled

DHCP Server

Start IP : 192.168.2.100

End IP : 192.168.2.200

Fig. 10

Click on LAN setting.

Have the option of “DHCP Server” turn off.

The default IP address is 192.168.2.1. It is optional that you assign a new IP address to the repeater. The repeater can work fine even its IP address is not in the wireless network.

However, you may want to assign a new IP to the repeater which may help you trouble shoot and easily access the repeater setup later.

Click on Apply.

Save settings successfully!

You may press CONTINUE button to continue configuring other settings or press APPLY button

CONTINUE APPLY

Fig. 11

Click on Continue button. We have one more setting to be done.

Home Quick Setup **General Setup** Status Tools

System | WAN | LAN | Wireless | Advanced Settings | NAT | Firewall |

- Virtual Server
- Special applications
- UPnP Setting
- ALG Settings
- Static Routing**

Enable Static Routing

Destination LAN IP	Subnet Mask	Default Gateway	Hop Count	Interface
<input type="text"/>	<input type="text"/>	<input type="text"/>	<input type="text"/>	LAN

Add Reset

Current Static Routing Table:

NO.	Destination LAN IP	Subnet Mask	Default Gateway	Hop Count	Interface	Select

Delete Selected Delete All

Apply

Fig. 12

Go to NAT settings.

Go to the option of “Static Routing”.

Put a check on the check box of “Enable Static Routing”. Click on Apply.

Save settings successfully!

You may press CONTINUE button to continue configuring other settings or press APPLY button

CONTINUE APPLY

Fig. 13

Click on Apply for the router save settings and reboot.

After 60 seconds, the router becomes as a repeater

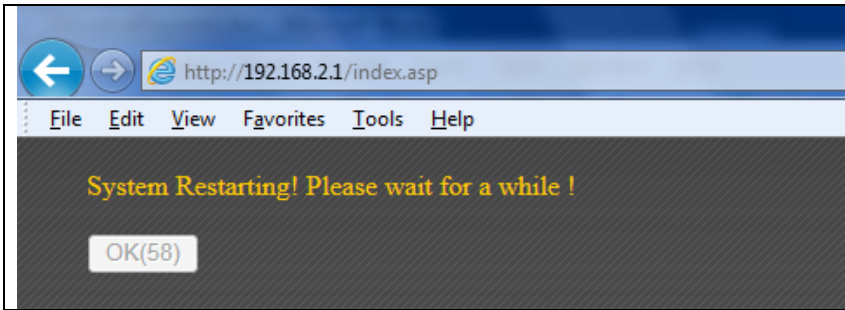


Fig. 14

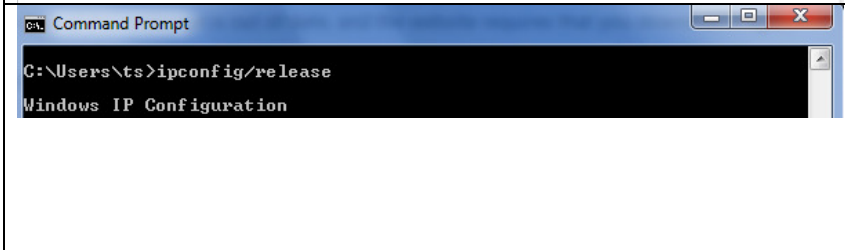
After 60 seconds, the router will become as a repeater.



Fig. 15

Verify if your Ethernet computer has Internet.
If it has Internet, you can have your wireless computers connect to the repeater.

Congratulations! You've finished the repeater setup.



Sometimes in order for your computer get the IP address from your wireless router, you need to go into cmd prompt and type "ipconfig /release" hit Enter, type "ipconfig /renew" hit Enter key.



To go into cmd prompt:
For Windows XP, click on Start -> Run, enter "cmd" hit OK.
For Windows Vista/Windows 7, click on Start, go to the box of "Search programs and files" enter "cmd" hit Enter key.