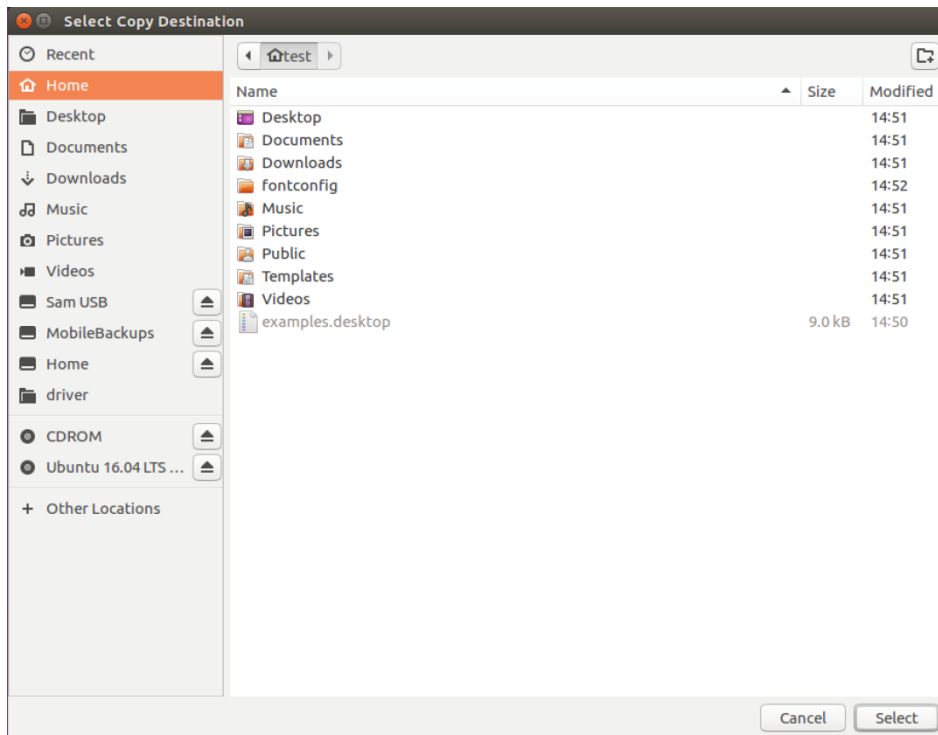
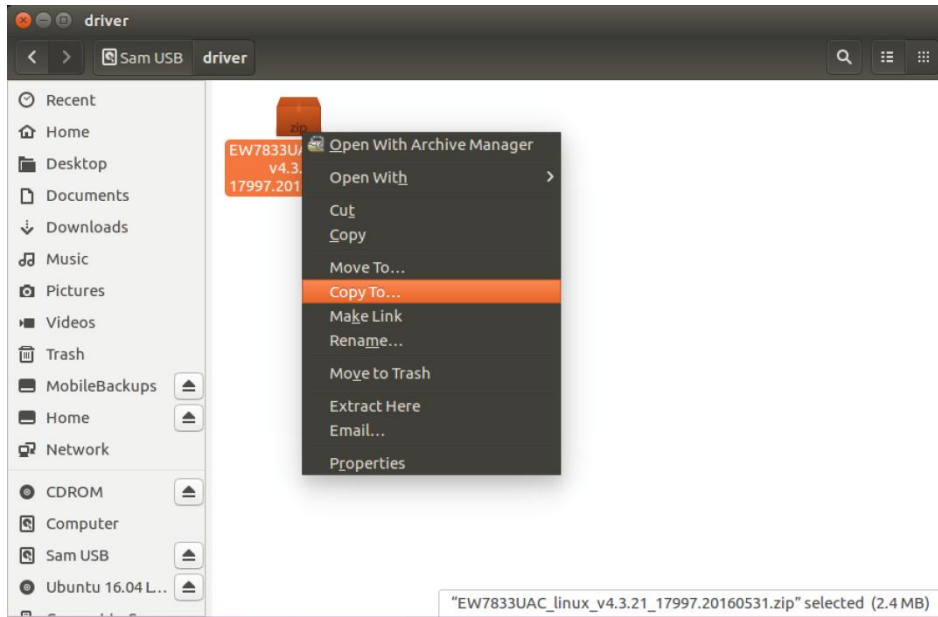
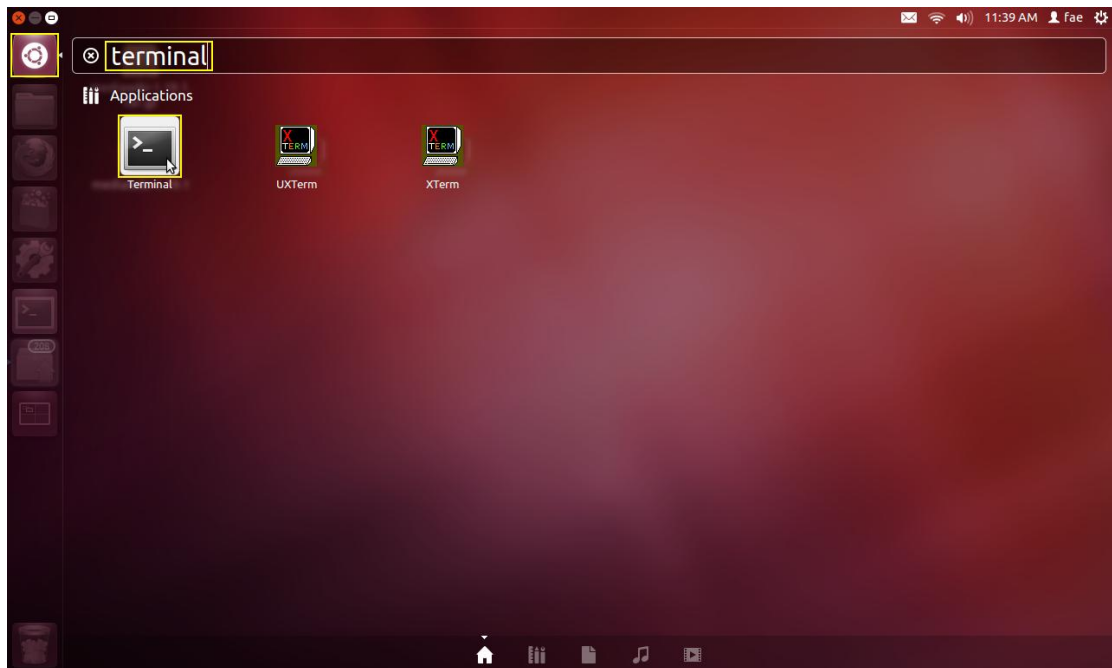


## How to Install EW-7833UAC on Ubuntu 16.04

1. Please make sure the PC has connected to the internet successfully.
2. Please save the driver in the USB storage, and then plug the USB into the computer. Open the USB Disk folder and click right mouse on driver as below. Select "Copy to" >> "Home", then click Select. And you could remove the USB Disk.



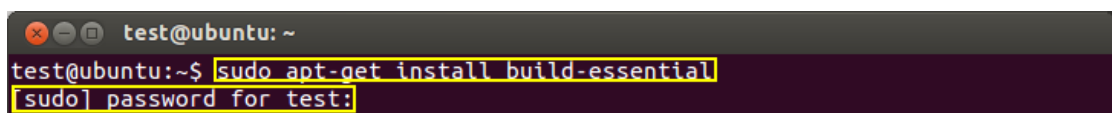
3. Click on “Search your computer” >> Type “terminal” >> Click on “terminal” icon.



4. Download the packet which is necessary while building the driver. Please execute the command as blow.

**sudo apt-get install build-essential**

Type the password for the administrator, and then type “y” to install the gcc packet.



5. Change to the “Home” Directory. Please type the command as below.

**cd /home/test**

Please note that “test” is the user name which you use to log in.



6. Extract the driver. Please execute the command as below.  
**unzip EW7833UAC\_linux\_v4.3.21\_17997.20160531.zip**

```
test@ubuntu: ~  
test@ubuntu:~$ unzip EW7833UAC_linux_v4.3.21_17997.20160531.zip
```

7. Change to the driver folder. Please execute the command as below.  
**cd EW-7833UAC\_linux\_v4.3.21\_17997.20160531**

```
test@ubuntu: ~  
test@ubuntu:~$ cd EW7833UAC_linux_v4.3.21_17997.20160531/
```

8. Build the driver. Please execute the command as below, and then input the password.  
**sudo make**

```
test@ubuntu: ~/EW7833UAC_linux_v4.3.21_17997.20160531  
test@ubuntu:~/EW7833UAC_linux_v4.3.21_17997.20160531$ sudo make  
[sudo] password for test:
```

9. Install the driver.  
**sudo make install**

```
test@ubuntu: ~/EW7833UAC_linux_v4.3.21_17997.20160531  
test@ubuntu:~/EW7833UAC_linux_v4.3.21_17997.20160531$ sudo make install
```

10. Please plug into the EW-7833UAC to the computer, click on the network tray icon, and EW-7833UAC is able to connect to wireless network.

