

Fast Ethernet / 300Mbps Wireless 802.11n / PoE Triple Mode Pan/Tilt IP Camera with Night Vision

IC-7010PT / IC-7010PTn / IC-7010PoE
Quick Installation Guide

Version 1.0 / June, 2010



ErP Announcement

Product: Internet Camera (IP Camera)

Purpose: 24 hour surveillance and transfer of footage for safety and health reasons as intended use.

Detailed description:

- **Health purposes:** Users can pass through the Internet (from anywhere) to control the product (IP Camera). It's intended to watch and listen to people who need to be cared for at home and automatically sends e-mails and phone alerts to warn observers and ask for their attention. The product also provides a record function to retain all images and voice information for the sake of reference.
- **Safety purposes:** Users can initiate a "motion detect" function to record and send e-mails to notify them when doors or windows are opened – potentially by unwarranted persons.
- **General purposes:** Record/monitor environment footage and sound and store them onto a hard disk as a record.

As we cannot predict when events of this nature may occur, we need for the product to remain active and alert at all times. If the product had to go into "standby/off" mode, it would impact the effectiveness of recording and warning functions resulting in users not getting the information they need.

Based on the ErP official journal of European Union

Directives 2009/125/CE of the European parliament and of the council of 21 October 2009 Article 15 sector 5 part (a) and (b) as below:

"Implementing measures shall have no significant negative impact on the functionality of the product, from the perspective of the user."

"Health, safety and environment shall not be adversely affected."

We announce that the product need not comply with the (EC) No 1275 Standby and on/off mode function of Implementing Measurement.

We will keep up to the newest Implementing Measurements in the future and make the necessary changes if it's related to this product.



Copyright© by Edimax Technology Co, LTD. all rights reserved. No part of this publication may be reproduced, transmitted, transcribed, stored in a retrieval system, or translated into any language or computer language, in any form or by any means, electronic, mechanical, magnetic, optical, chemical, manual or otherwise, without the prior written permission of this Company.

This company makes no representations or warranties, either expressed or implied, with respect to the contents hereof and specifically disclaims any warranties, merchantability or fitness for any particular purpose. Any software described in this manual is sold or licensed "as is". Should the programs prove defective following their purchase, the buyer (and not this company, its distributor, or its dealer) assumes the entire cost of all necessary servicing, repair, and any incidental or consequential damages resulting from any defect in the software. Further, this company reserves the right to revise this publication and to make changes from time to time in the contents hereof without obligation to notify any person of such revision or changes.

The product you have purchased and the setup screen may appear slightly different from those shown in this QIG. For more detailed information about this product, please refer to the User's Manual on the CD-ROM. The software and specifications could be subjected to change without notice. Please visit our web site www.edimax.com for updates. All rights reserved including all brand and product names mentioned in this manual are trademarks and/or registered trademarks of their respective holders.

Linux Open Source Code

Certain Edimax products include software code developed by third parties, including software code subject to the GNU General Public License ("GPL") or GNU Lesser General Public License ("LGPL").

Please see the [GNU](http://www.gnu.org) (www.gnu.org) and **LPGL**

(www.gnu.org) Websites to view the terms of each license.

The GPL Code and LGPL Code used in Edimax products are distributed without any warranty and are subject to the copyrights of their authors.

For details, see the GPL Code and LGPL Code licenses. You can

download the firmware-files at
<http://www.edimax.com> under "Download" page.

1. Product Information

Congratulations on buying this Edimax IP Camera! You've chosen well. The Edimax IC-7010 series features built-in IR (infra red) LED and motorized Pan/Tilt with viewing angle 355 degree horizontally and 120 degree vertically which makes the cameras suitable for almost all security and surveillance applications. This Edimax IP camera is tailor made to stream live video over your network, so you can view its footage from anywhere on your local computers. Better yet, you can view its video and hear its sound live via the Internet! The Edimax IC-7010 series features extremely high picture quality matched by a high frame rate video streaming because of advanced video compression. To get the best video quality, select H.264, MPEG4 or M-JPEG, depending on your network settings.

Before enjoying your new IP camera, please check the package contents. If anything is missing, return this package to your dealer to claim the missing contents.

2. Check your package contents

- 1 x IP Camera
- 1 x Power Adapter
- 2 x Detachable Antenna (IC-7010PTn only)
- 1 x Mounting Kit
- 1 x Category 5 Ethernet Cable
- 1 x Quick Installation Guide
- 1 x CD (Including Manual/Utility/Multi-Language QIG)
- 1 x Accessory Kit

3. System Requirement

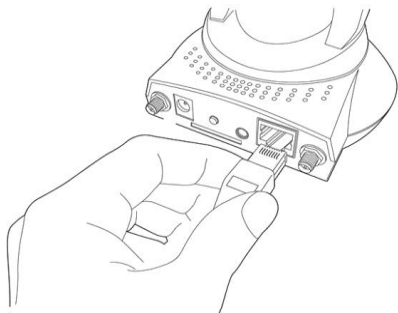
- CPU: Intel Pentium 4 2.4 GHz above or Intel Dual-Core 2.0GHz
- VGA Card Resolution: 1024 x 768 or above
- A CD-ROM Drive
- Hard Disk: At least 128MB (256MB recommended) of

available space
OS: Windows 2000/XP/Vista/7

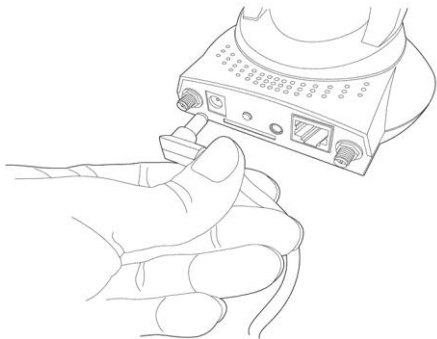
4. Hardware Installation

Please follow the following instructions to set the camera up:

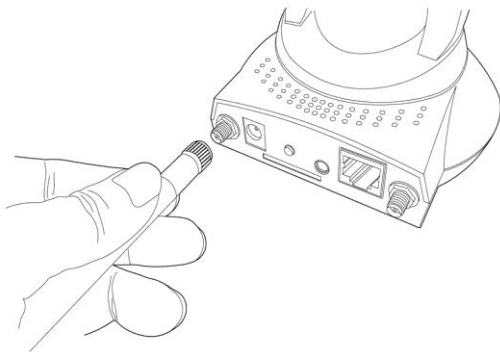
1. Connect the Ethernet cable to your local area network, and connect the other end to the LAN jack of this IP camera.



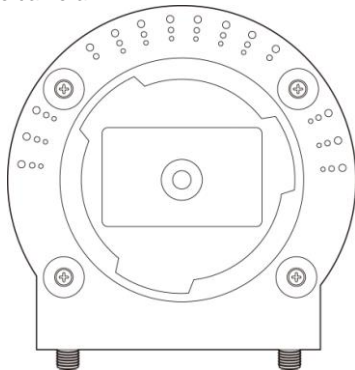
2. Plug the power adapter to wall socket and connect the power connector to the power jack located at the back of the IP camera.



3. Connect the antennas to the antenna base (for IC-7010PTn only) located at the back of the IP camera.

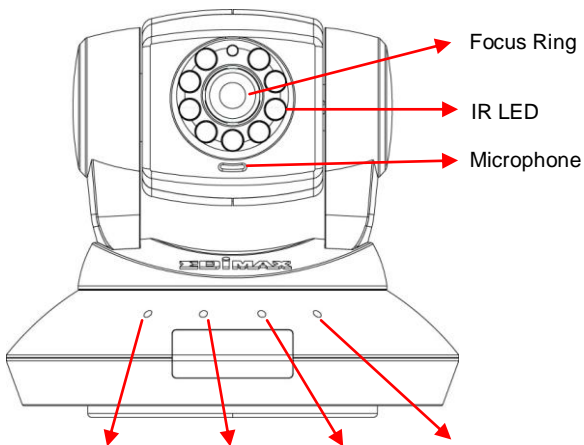


4. Place the IP camera at a secure place, and point the camera to the place you wish to monitor. If you wish to hang the camera on the ceiling or wall, please use the tripod connector (located at the bottom of the IP camera as shown on the below) to secure the camera.




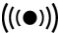
5. Familiar with Key Components


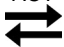

Front View



Wired & Wireless: Power LED Audio LED LAN LED WLAN LED

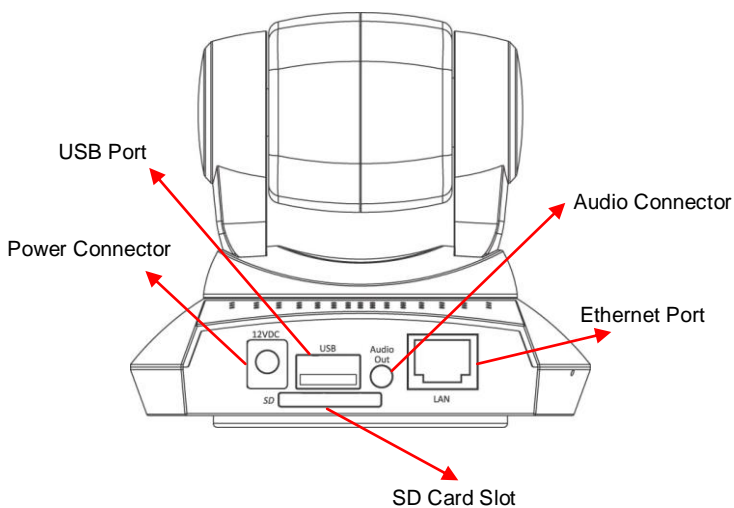
POE model: Power LED Audio LED ACT LED LAN LED

Item	Description
Power 	When the camera is powered on and ready for access, this LED will light up.
Audio 	Indicates Audio status

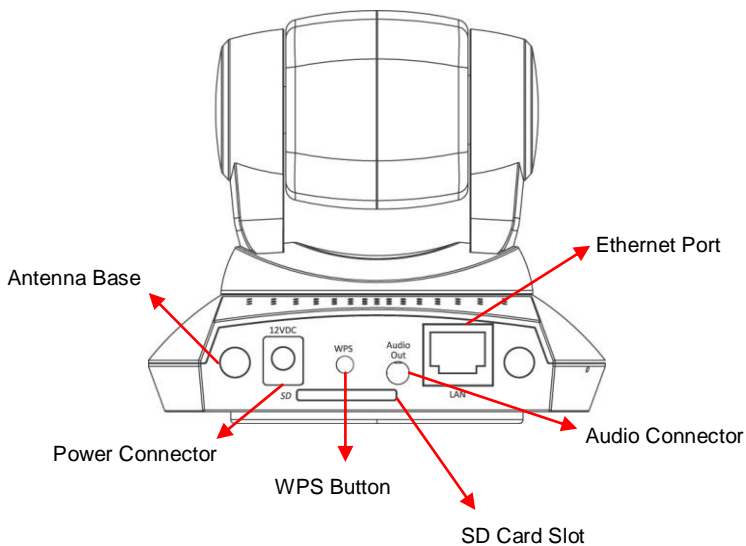
 <p>LAN</p>	<p>When the IP Camera is linked to a wired network, this LED will light up. The LED will flash while video is transmitted or received through a wired network.</p>
<p>ACT</p>  <p>(IC-7010PoE only)</p>	<p>The LED will flash while data is transmitted.</p>
<p>Wireless</p>  <p>(IC-7010PT & IC-7010PTn only)</p>	<p>When the IP Camera is linked to a wireless network, this LED will light up. The LED will flash while video is transmitted or received through a wireless network.</p>
<p>Focus Ring</p>	<p>You can change the aim and focus of the camera by adjusting the camera head's aim and adjusting the focus ring. Simply point it in your direction of choice and rotate the focus ring to your preference.</p>
<p>IR LEDs</p>	<p>Lights up when environment is too dark</p>
<p>Microphone</p>	<p>Collects audio</p>

Back View

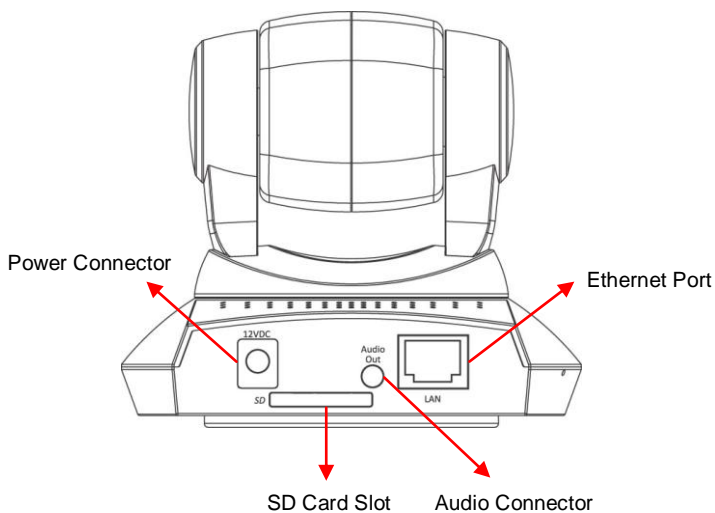
IC-7010PT:



IC-7010PTn:



IC-7010PoE:

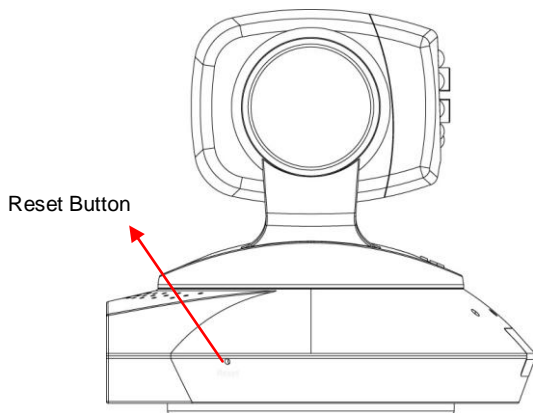


Item	Description
Power Connector	Connects to 12V DC power adapter
SD Card Slot	Accepts SD / SD-HC memory card for image / video storage
USB Port* (IC-7010PT only)	Accepts USB WiFi adapter** to enable wireless
Audio Connector	Connects to external speaker for audio output
Ethernet Connector	Connect to your local area network
Antenna Base (IC-7010PTn only)	Connects to supplied antenna
WPS Button (IC-7010PTn only)	Press the WPS button (click) on the IP Cam and click on the Access Point that you want to wirelessly connect it to.

Note: The USB port only works with Edimax USB WiFi adapters.

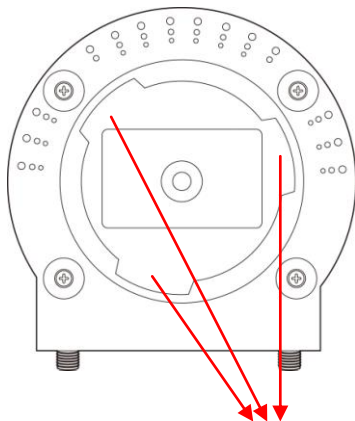
Note: Edimax EW-7711HPn, EW-7711UAn, EW-7711USN, EW-7711UMn & EW-7711UTn

Side View



Item	Description
Reset Button	Press the button with pen nib and hold for 5 seconds to reset the camera settings to factory default value.

Bottom View



Tripod Connector

Item	Description
Tripod Connector	Connects to tripod to secure the camera when the camera is not put on a horizontal surface.

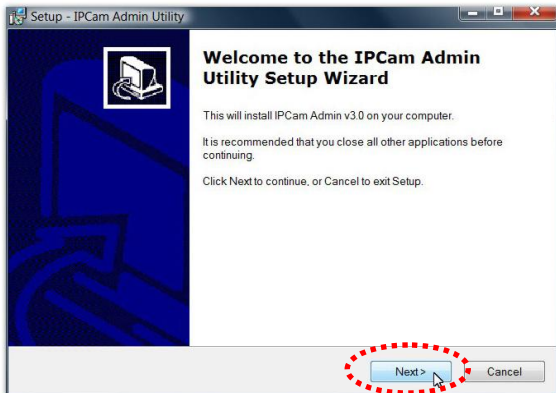
6. Software Installation

The Installation Wizard will guide you through this simple process. Below we tell you how to get it started up. The following example is for Windows Vista. The procedure is similar for Windows 2000/XP/7.

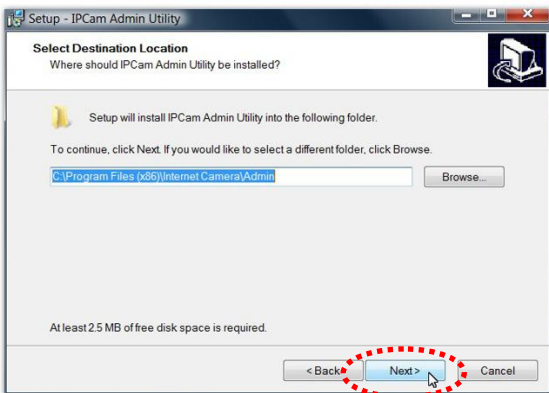
1. Insert the Edimax CD into your CD-ROM drive. It should start up automatically. If it doesn't, click on "Autorun.exe" in the "Autorun" folder on the CD.
2. The Install Wizard will give you four options to choose from. Here you can select program you wish to install. The following installation steps are a demonstration of installing the 'Administrator Utility & Camera Viewer'. Click on 'setup utility'.



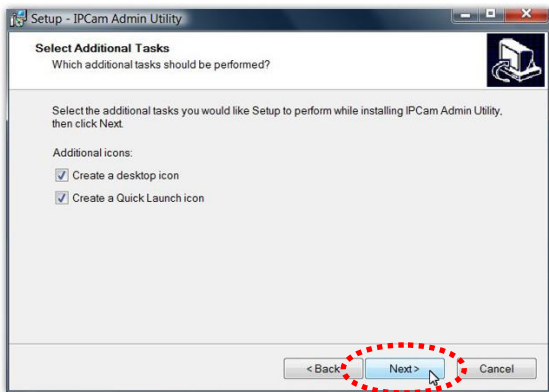
3. The 'Install Wizard' should take you here. Click on 'Next' to continue your installation.



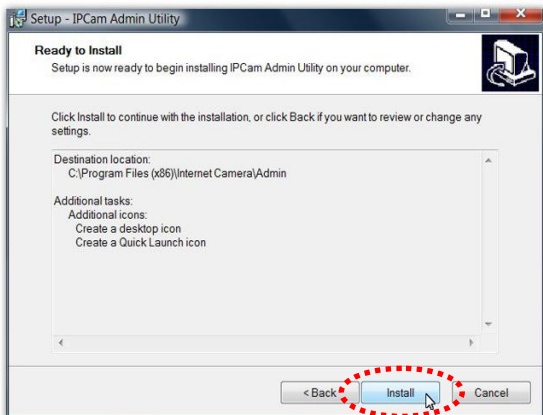
4. Click on 'Next' to move to the next step. If you wish to install the program to an alternate location, click on 'Browse' and select a location.



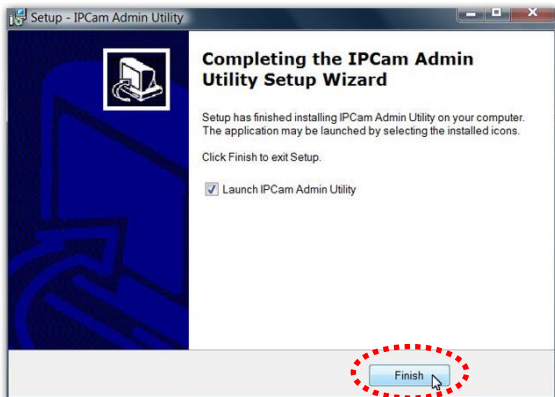
5. Click '**Next**' to move on to the next step or make your selections here.



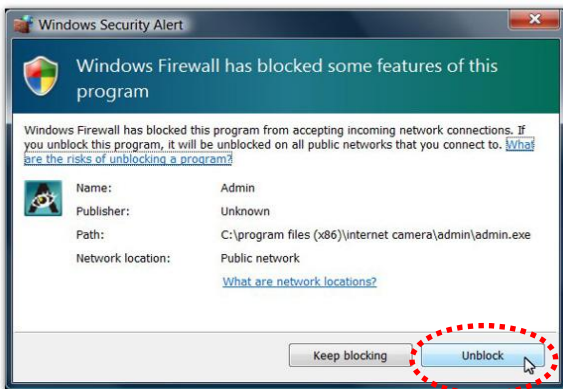
6. Click on **'Install'** to install the program.



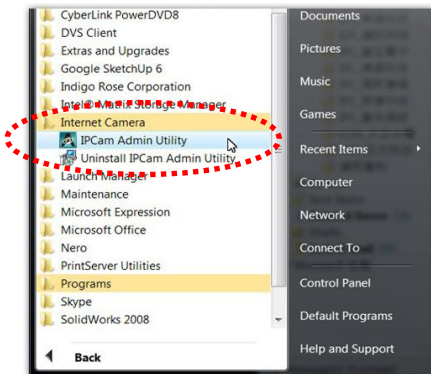
7. Click '**Finish**' to confirm the software installation.



8. If you have Windows Defender or other 3rd party firewall software, you may see the following or a similar message, Please click '**Unblock**' to allow your Edimax IP camera Utility to pass through the firewall. Not doing so may cause the IP camera utility to not function optimally.



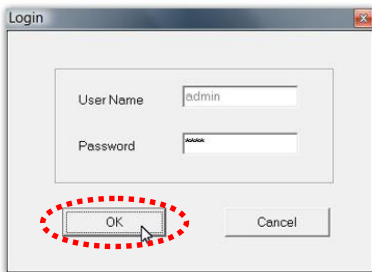
9. A new folder named 'Internet Camera' under 'All Programs' will be created. Click on 'IP Cam Admin Utility' to connect to the IP camera and use the camera's functions directly.



10. After installation, the system will automatically run the 'Administrator Utility'. On the first page, the cameras found in your network will be listed. Select the one you wish to configure and click on the 'Configure Camera' icon.



11. You will be prompted to insert your user name and password. The default user name is '**admin**' (unchangeable), and the default password is '**1234**' (changeable). Click '**OK**' to continue.



12. The program will automatically detect the IP address status of your network and suggest a free IP address for the IP Camera using DHCP. You can accept the suggested address or enter the values manually. If you enter the values manually, ensure that the 'Subnet Mask' is the same for both the camera and the PC. Since the IP Camera works through the network (TCP/IP Protocol) the IP address setting must be correct for you to access the IP camera. Click '**OK**' to apply your configuration.



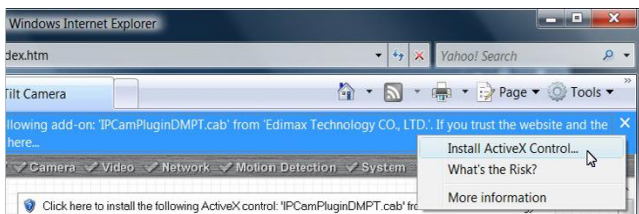
6. WEB Management Interface

You can use your WEB browser (Internet Explorer 5.5 or above) to connect to the IP camera. Type the IP address (see 5.12) in the address bar of your web browser. Bookmark the address for ease of future use. You'll be prompted to insert a user name and password:

User name: **admin** / Password: **1234**



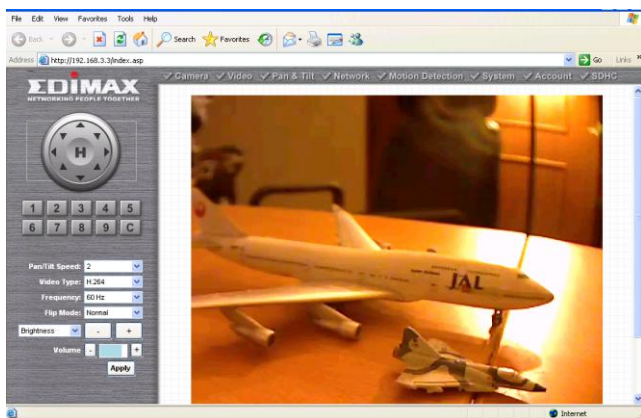
Once you're logged on, you will see the following message appear at the top of Internet Explorer. Click on the message, and click **'Install ActiveX Control...'**



When you see this message, click '**Install**'. ActiveX control will be installed, allowing you to access the IP camera.



You should now be able to see the images and hear the sounds captured by the Edimax IP camera. For advanced functions, please refer to instructions in the user manual (also on CD-ROM).



R&TTE Compliance Statement

This equipment complies with all the requirements of DIRECTIVE 1999/5/EC OF THE EUROPEAN PARLIAMENT AND THE COUNCIL of March 9, 1999 on radio equipment and telecommunication terminal Equipment and the mutual recognition of their conformity (R&TTE)

The R&TTE Directive repeals and replaces in the directive 98/13/EEC (Telecommunications Terminal Equipment and Satellite Earth Station Equipment) As of April 8, 2000.

Safety

This equipment is designed with the utmost care for the safety of those who install and use it. However, special attention must be paid to the dangers of electric shock and static electricity when working with electrical equipment. All guidelines of this and of the computer manufacturer must therefore be allowed at all times to ensure the safe use of the equipment.

EU Countries Intended for Use

The ETSI version of this device is intended for home and office use in Austria, Belgium, Denmark, Finland, France, Germany, Greece, Ireland, Italy, Luxembourg, Bulgaria, Cyprus, Czech Republic, Estonia, Hungary, Latvia, Lithuania, Malta, Poland, Romania, Slovakia, Slovenia, the Netherlands, Portugal, Spain, Sweden, and the United Kingdom.

The ETSI version of this device is also authorized for use in EFTA member states: Iceland, Liechtenstein, Norway, and Switzerland.

EU Countries not intended for use

None



AЯ46



N20379



EDIMAX Technology Co., Ltd.
www.edimax.com